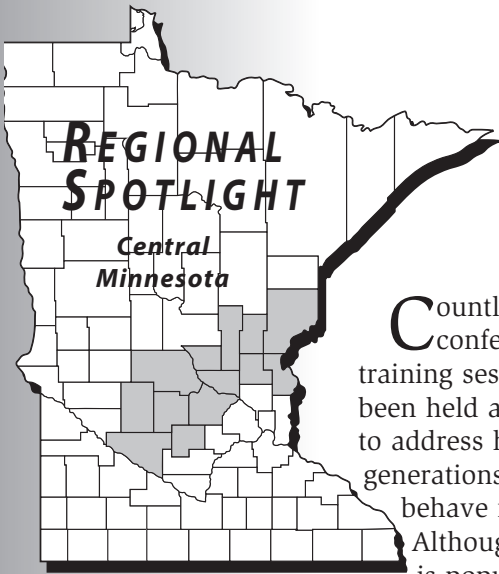


# Minnesota Employment Review

*Review*  
O N L I N E

[mn.gov/deed/review](http://mn.gov/deed/review)

April 2017 Data...May 2017 Issue



## Generations of Generalizations: *What the Data Say About Generations in the Workforce*

Countless meetings, conferences, and training sessions have been held across the state to address how different generations interact and behave in the workplace. Although the topic is popular, many times observations and perceptions are cited and applied to explain behaviors for generations comprising thousands of individuals.

But what do the data *really* tell us about how different generations interact with the labor market? Is Central Minnesota's economy utilizing workers of all ages to meet the demands of a tight labor market? Why are Millennials such feverish job hoppers? Do older workers who get new jobs earn less than their younger counterparts who get new jobs? These are just some of the questions that create interest, confusion, and anxiety about generations in the workforce.

### *Kids These Days...*

Although Millennials are now the most populous generation, the youngest of them have significantly lower labor force participation rates. This means a lower share are actually in the labor force than Generation X, which currently has the highest labor force participation rates among generations.

In 2015 only 53 percent of all Minnesota teenagers were participating in the labor force, but by their early 20s the participation rates for Millennials jumped to 85 percent, 3.7 points higher than Baby Boomers aged 55 to 59 years. Rates drop to 63 percent for 60 to 64 year olds and to 27.5 percent for 65 to 74 year olds. Contrary to many colorful conversations,



### Feature:

County Snapshots:  
*Benton, Big Stone,  
Blue Earth, Brown*

### In this issue:

- 1 Regional Spotlight
- 5 NAICS Primer
- 6 Local Area Unemployment Statistics
- 8 Industrial Analysis
- 10 Regional Analysis
- 11 Current Employment Statistics
- 14 Economic Indicators
- 16 Economic Snapshot

Regional  
**Spotlight**  
CENTRAL MINNESOTA

young workers - especially those just out of high school - are working at higher rates than many of their older critics.

Moreover, the difference in the size between the three dominant generations - Millennials, Generation X, and Baby Boomers - might be smaller than some believe. In Central Minnesota Millennials outnumber Generation X by 44,946 and Baby Boomers by just 17,622. Figure 1 provides some context to the population of each generation in Central Minnesota.

### Job Hopping Millennials

A hot topic in conversations about the difficulty of employing Millennials is the perception of their hopeless rate of retention and lack of loyalty to the companies that employ them. Analyzing Quarterly Workforce Indicators (QWI) from the U.S. Census Bureau helps provide data that allow a deeper understanding. Reliable and detailed

employment data provided from Quarterly Workforce Indicators have slightly different age cohorts available for analysis as shown in Table 1.

With overall turnover at 9.2 percent in Central Minnesota, the region's turnover rate has leveled off after increasing from 7.7 percent during the recession in 2009. Retention problems might seem unprecedented today, but turnover rates are much lower than the 12.5 percent peak in 1999.

As expected, the data confirm a higher than normal turnover rate for Millennials. At 14.4 percent it's more than twice as high as the roughly 6.5 percent rate of turnover for Generation X and Baby Boomers in 2015. What's more interesting is the historical turnover trends for different age groups.

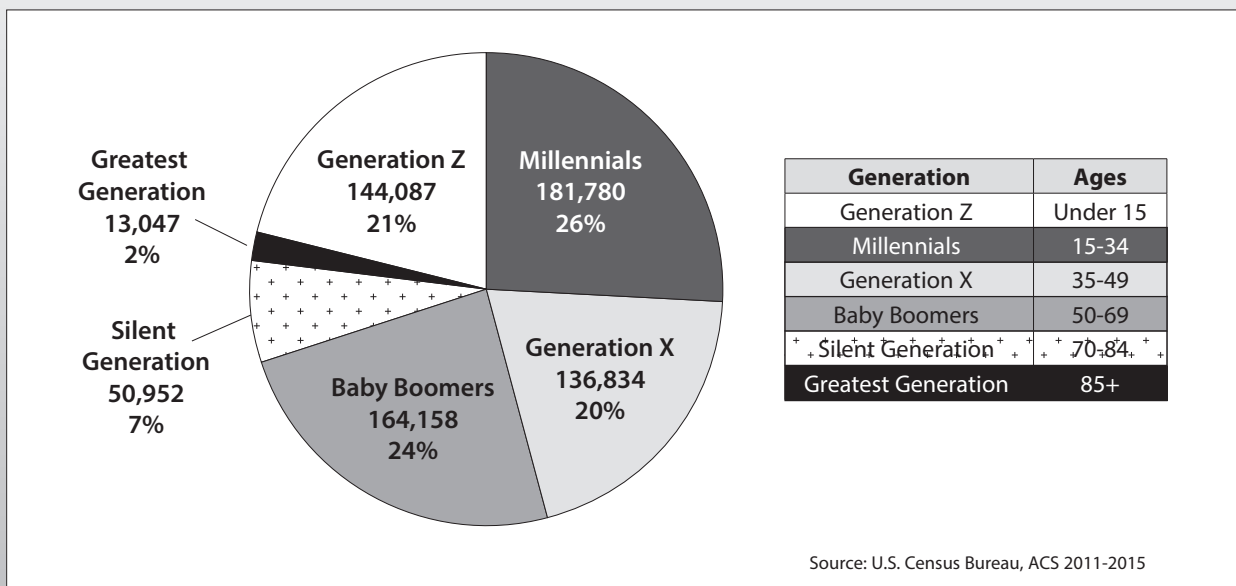
Millennials (workers currently between 14 and 34 years of age), have a lower turnover rate than workers who were 14 to 34 years

old in the late 1990s. The rate of workers churning through jobs peaked for 14 to 34 year olds in 1999. A 19 year old in 1999 would be 35 years old in 2015, and a 34 year old in 1999 would be 50, which are both considered Generation X today. Workers in the 14 to 34 year old age group have had higher rates of turnover going back as far as the data go (1995).

Fewer conversations about the youngest workers focus on the advantages of turnover or how it relates to the labor market. Easily visible in Figure 2 is the adverse impact business cycles have on turnover rates, particularly for the youngest workers. In reality, turnover is much more a reflection of labor market conditions and less about generational personalities.

The last recession in 2007 impacted Millennial workers far more than Generation X and Baby Boomers in terms of turnover. Turnover rates plunged from 15 percent to 11.6 percent by the

**Figure 1**  
**Central Minnesota Population by Generation**



**Table 1**  
**Labor Force Cohorts**

| Generation   | Ages  |
|--------------|-------|
| Millennials  | 14-34 |
| Generation X | 35-54 |
| Baby Boomers | 55+   |

time the recession ended in 2009. Meanwhile, workers in the Gen X and Baby Boomer age cohorts declined by a point or less.

Turnover, as seen in Figure 2, is a function of prosperity and job mobility, typically procyclical.

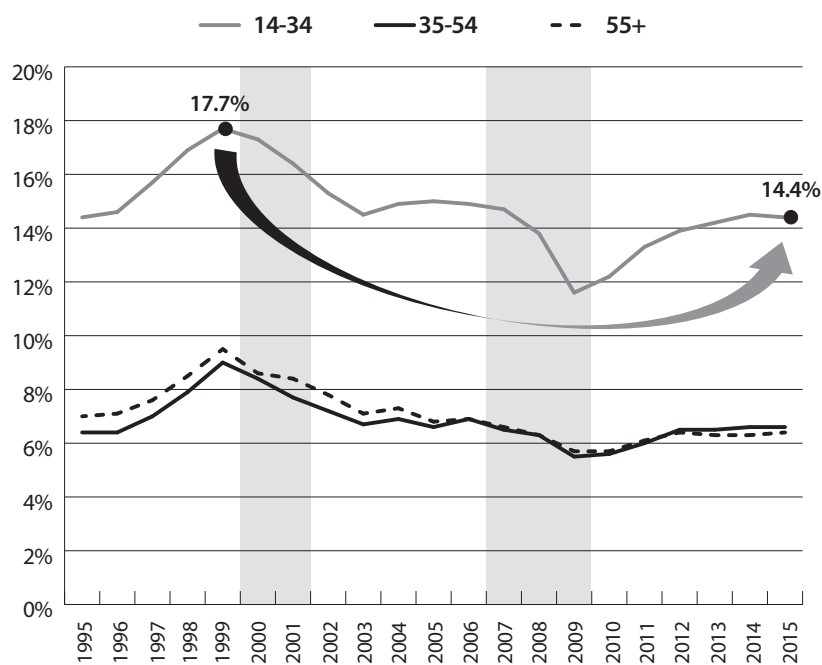
In fact, Baby Boomers were quite the job hoppers themselves. A longitudinal study from the Bureau of Labor Statistics found that individuals born between 1957 and 1964 (today they would be 53 to 60 years old) held 5.5 jobs between the ages of 18 to 24, and three jobs from 25 to 29 years. The new generation today might have the same stigma that every previous generation has had.

The bottom line is that young workers are new to the workforce and experimenting with different jobs, trying to find the right fit, while also looking for better opportunities. Workers under 30 typically experience higher wage growth than their older colleagues, most of this from changing jobs.

### Out With the Old

Millennials aren't the only generation with negative perceptions. Thanks to the mass layoffs during the recession, many older workers were cut from the ranks of veteran positions and pushed into job seeking mode.

**Figure 2**  
**Turnover Rates by Age Cohort in Central Minnesota**



Source: U.S. Census Bureau, QWI

Facing a challenging labor market, some workers took lower paying jobs in order to rejoin the ranks of the gainfully employed.

Perceptions persist, however, that older workers who seek new employment opportunities are at a disadvantage, and the wages they are offered are lower. The data tell a slightly different story. The cohort of oldest workers, including Baby Boomers, actually find starting wages at their new positions to be higher than typical. In 2015 workers 55 and older who started a new job had average monthly earnings of \$2,425, which was 11 percent higher than the wages earned by new hires of all ages in Central Minnesota.

New hires with the highest average wage were Generation X workers at nearly \$2,900 per month, a full 32 percent higher

than the average for all new hires. Millennial workers experienced the lowest monthly earnings at new jobs, averaging \$1,118 less than Generation X workers and \$652 less than Baby Boomer workers.

There are many reasons why workers get a new job, and the data include both voluntary and involuntary job changes, as well as second jobs. Regardless of the reason for getting a new job, older workers are getting higher-paying new jobs than Millennial workers and are bested only by Generation X workers. Even so, it appears that much of the difference between Generation X and Baby Boomer new job earnings is from the oldest workers (65 years and older) earning much less. It's possible that many of the workers 65 years and older are looking to reduce stress and responsibilities at work or even

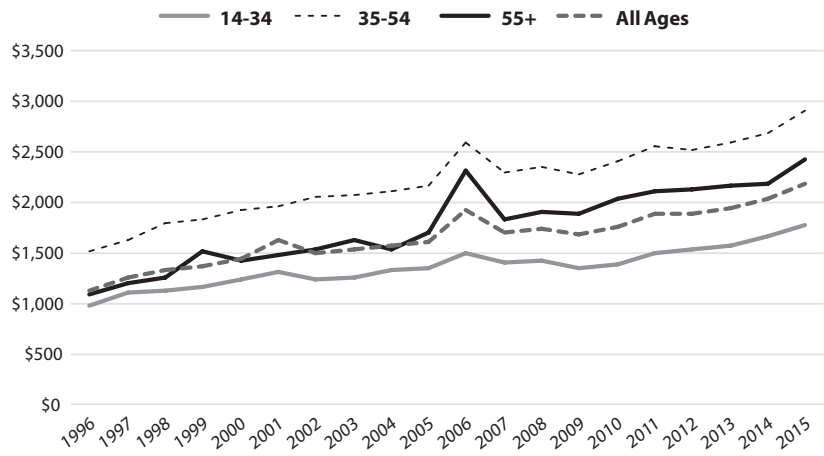
work part-time during retirement, resulting in lower average earnings (see Figure 3).

### Newcomers

One very important clue the data provide are how each generation has been faced with different economic conditions as they age. For example, Millennials, Generation X, and Baby Boomers all experienced the Great Recession, but at different ages. The recession is just one of the external factors. In the last 20 years, for example, employment in Central Minnesota has experienced overall growth, but not all industries have expanded. Manufacturing jobs are at nearly the same level in 2016 as they were in 1995, both Utilities and Mining have roughly half of the jobs they did in 1995, and Management of Companies has also declined.

The very idea of “generations” might be little more than a way for older populations to separate themselves from younger “inferior” people that are in the early learning stages of work and life. Popular culture has labeled every new generation as self-absorbed disasters for more than 100 years, yet each new generation grows older and makes vast contributions to better the welfare of the next generation of screw-ups. The point is that no matter how different each generation is or isn’t, Central Minnesota’s economy shapes the opportunities and challenges that all workers face. Despite stereotypes and commonly-held perceptions, most workers are simply reacting to the economic environment.

**Figure 3**  
**Average Monthly Earnings in Central Minnesota by Generation**



Source: U.S. Census Bureau, QWI



by Luke Greiner  
Regional Analyst, Central Minnesota  
Department of Employment and Economic Development

## 23: Construction

The defining NAICS for this sector is 23. The Construction sector is made up of establishments primarily engaged in the construction of buildings or engineering projects (e.g., highways and utility systems) as well as establishments primarily engaged in the preparation of sites for new construction and establishments primarily engaged in subdividing land for sale as building sites. Construction work done may include new work, additions, alterations, or maintenance and repairs. Activities of these establishments generally are managed at a fixed place of business, but they usually perform construction activities at multiple project sites. In 2015 Minnesota had 15,549 establishments in this sector employing 121,703 people. Employment was highest in the Highway, Street, and Bridge Construction subsector. The subsector with the largest number of establishments was Residential Remodelers (see Table 1).

**Table 1. Construction Employment and Wages - 2015**

| Subsector   | Establishments | Employment |
|---|----------------|------------|
| Highway, Street, and Bridge Construction (237310)                           | 488            | 14,346     |
| Commercial and Institutional Building Construction (236220)                 | 831            | 12,043     |
| Nonresidential Electrical Contractors (238212)                              | 554            | 10,077     |
| Nonresidential Plumbing, Heating, and Air-Conditioning Contractors (238222) | 418            | 9,416      |
| New Single-Family Housing Construction (except For-Sale Builders) (236115)  | 1,583          | 5,152      |
| Residential Remodelers (236118)   | 1,589          | 4,900      |

<https://apps.deed.state.mn.us/lmi/qcew/ResultsDisp.aspx>

## 31-33: Manufacturing

The two digit NAICS for this sector is a range from 31 to 33. The Manufacturing sector is composed of establishments engaged in the mechanical, physical, or chemical transformation of materials, substances, or components into new products. In 2015 there were 7,795 establishments in this sector employing 317,210 people. Employment was highest in the Commercial Printing (except Screen and Books) subsector. The subsector with the greatest number of establishments was the Machine Shops subsector (see Table 2).

**Table 2. Manufacturing Employment and Wages - 2015**

| Subsector  | Establishments | Employment |
|--|----------------|------------|
| Commercial Printing (except Screen and Books) (323111)                 | 510            | 18,195     |
| Electromedical and Electrotherapeutic Apparatus Manufacturing (334510) | 76             | 13,445     |
| Machine Shops (332710)   | 617            | 11,801     |
| Surgical and Medical Instrument Manufacturing (339112)                 | 118            | 10,168     |
| All Other Plastics Product Manufacturing (326199)                      | 221            | 9,693      |
| Poultry Processing (311615)  | 21             | 6,209      |
| All Other Miscellaneous Manufacturing (339999)                         | 338            | 2,831      |

<https://apps.deed.state.mn.us/lmi/qcew/ResultsDisp.aspx>

More detailed information on NAICS sectors can be found at <https://apps.deed.state.mn.us/lmi/qcew/ResultsDisp.aspx>

by Chloe Campbell





# Industrial Analysis

## Overview

Minnesota added 15,100 jobs (0.5 percent) in April on a seasonally adjusted basis. This was the largest single-month addition to Total Nonfarm employment since September of 2013. The state has added more than 10,000 jobs three times in the last 12 months, a mark that hadn't been reached since 2013 prior to that. Sizeable monthly losses have occurred during the same time period, however, suggesting that some of these changes may be influenced by changing seasonal patterns. Annually Minnesota added 34,715 jobs (1.2 percent), the 10th straight month with over-the-year growth of greater than 1 percent. Private sector employers added 32,030 jobs (1.3 percent) while the public sector added 2,685 (0.6 percent). Both service providers and goods producers grew on the year, adding 30,516 jobs (1.2 percent) and 4,199 jobs (1 percent) respectively.

## Mining and Logging

Mining and Logging lost 100 jobs (1.4 percent) in April, giving back some of the 6.1 percent gain the supersector had in March. Over the year Mining and Logging employment was up by 787 (13.7 percent). Although the over-the-year change may make the supersector's employment growth appear very strong, it largely reflects a recovery from an especially weak period last year.

## Construction

Employment in the Construction industry was up by 3,600 (3.0 percent) in April, after having shed 1,000 jobs in March. The supersector has alternated gains and losses over the past five months, although generally speaking the gains have been larger. Annually Construction

employment was up by 3,021 (2.7 percent). Employment in Building Construction was off by 1,126 (4.5 percent), but that loss was overshadowed by a gain of 3,920 (5.4 percent) in Specialty Trade Contractors. Heavy and Civil Engineering Construction added 227 jobs (1.5 percent).

## Manufacturing

Manufacturers in Minnesota added 1,100 jobs (0.3 percent) in April as Durable Goods Manufacturers added 500 (0.2 percent), and Non-Durable Goods Manufacturers added 600 (0.5 percent). It marked the third straight month of growth for the supersector. Annually employment in the supersector was up slightly, adding 391 jobs (0.1 percent). Durable Goods Manufacturers lost 1,693 jobs (0.8 percent), the 12th straight month of annual losses in the sector. Alternately, Non-Durable Goods Manufacturers added 2,084 jobs (1.8 percent) and has added jobs on an over-the-year basis consistently since 2013.

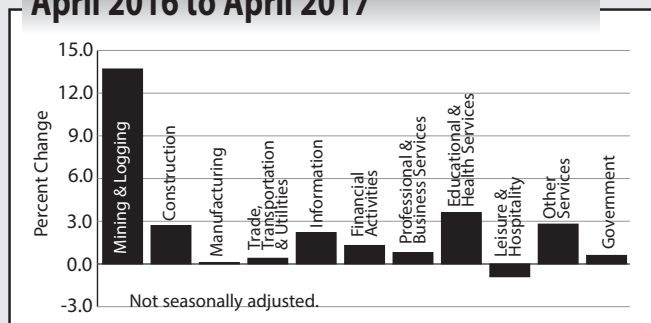
## Trade, Transportation, and Utilities

Trade, Transportation, and Utilities employment was off by 700 (0.1 percent) in April. After seeing a dramatic 5,700 job increase in February, the supersector has lost 2,400 jobs over the previous two months. April's loss was split between Wholesale and Retail Trade (down 200 or 0.2 percent and 1,300 or 0.4 percent respectively). Transportation, Warehousing, and Utilities added 800 jobs (0.8 percent). Annually the supersector added 1,899 jobs (0.4 percent). Retail Trade continued to drive the supersector's growth, adding 2,491 jobs (0.8 percent) on the strength of 1,951 jobs in Grocery Stores. Department Store employment, on the other hand, was off by 1,386 (5.5 percent).

## Information

Information employment was up by 200 (0.4 percent) in April. That marks two straight months of growth for the supersector which previously hadn't seen a single month of added jobs since October. Annually, employment in the supersector was up by 1,107 (2.2 percent). However, since the growth is concentrated in smaller and newer industry groups, both published component sectors still showed over-the-year job losses, with Publishing Industries (except Internet) losing 395 jobs (2.1 percent) and Telecommunications losing 271 (2.2 percent).

### MN Employment Growth April 2016 to April 2017



Source: Department of Employment and Economic Development, Current Employment Statistics, 2017.

\*Over-the-year data are not seasonally adjusted because of small changes in seasonal adjustment factors from year to year. Also, there is no seasonality in over-the-year changes.



## Financial Activities

The Financial Activities supersector lost 500 jobs (0.3 percent) in April. Real Estate and Rental and Leasing lost 900 jobs (2.7 percent), driving the decline. The component sector hasn't seen a monthly increase since October. Annually, the supersector added 2,263 jobs (1.3 percent). However, Real Estate and Rental and Leasing once again showed over-the-year job losses, off by 1,114 jobs (3.3 percent) from April of 2016.

## Professional and Business Services

Professional and Business Services added 2,700 jobs (0.7 percent) in April. Professional, Scientific, and Technical Services contributed 1,900 jobs to the gain, and Administrative and Support and Waste Management and Remediation Services added 900. Employment in Management of Companies was down by 100 (0.1 percent). Annually the supersector added 2,858 jobs (0.8 percent). Management of Companies and Enterprises added 1,418 jobs (1.8 percent), giving it the largest numerical and proportional growth of the component sectors, all three of which grew over the year.

## Educational and Health Services

Educational and Health Services added 4,300 jobs (0.8 percent) in April. The gains came entirely from Health Care and Social Assistance, which added 4,400 jobs (0.9 percent). Over the year Educational and Health Services added 18,929 jobs (3.6 percent). The supersector has shown annual growth of greater than 3 percent consistently since November. Although Health Care and Social Assistance, by far the larger of the two component sectors, contributed more jobs, the growth has been thanks to strong expansion in both areas. Educational Services was up by 3,647 jobs (5.1 percent) over April of 2016 and has maintained over-the-year growth since late 2014.

## Leisure and Hospitality

Leisure and Hospitality added 500 jobs (0.2 percent) in April. Arts, Entertainment, and Recreation added 1,300 jobs (3.1 percent), but Accommodation and Food Services lost 800 (0.4 percent). Annually the supersector lost 2,437

jobs (0.9 percent). Both component sectors lost jobs at a rate of around 1 percent. Leisure and Hospitality was the only supersector to show over-the-year job losses in Minnesota.

## Other Services

Other Services added 100 jobs (0.9 percent) in April. Annually the supersector added 3,212 jobs (2.8 percent). All three component sectors added around 1,000 jobs, with Repair and Maintenance growing by 4.6 percent (999 jobs), the largest proportional change of any of the sectors.

## Government

Government employment was up by 3,000 (0.7 percent) in April, with Local Government (up 2,300 or 0.8 percent) largely driving that increase. Annually Government employers added 2,685 jobs (0.6 percent). Local Government added 4,009 jobs (1.4 percent) thanks in large part to the Educational component, which added 3,599 jobs (2.4 percent).

by Nick Dobbins

## Seasonally Adjusted Nonfarm Employment

| Industry                             | In 1,000's     |                |                |
|--------------------------------------|----------------|----------------|----------------|
|                                      | April 2017     | March 2017     | February 2017  |
| <b>Total Nonagricultural</b>         | <b>2,944.4</b> | <b>2,929.3</b> | <b>2,923.7</b> |
| <b>Goods-Producing</b>               | <b>451.3</b>   | <b>446.7</b>   | <b>447.0</b>   |
| Mining and Logging                   | 6.9            | 7.0            | 6.6            |
| Construction                         | 124.8          | 121.2          | 122.2          |
| Manufacturing                        | 319.6          | 318.5          | 318.2          |
| <b>Service-Providing</b>             | <b>2,493.1</b> | <b>2,482.6</b> | <b>2,476.7</b> |
| Trade, Transportation, and Utilities | 537.9          | 538.6          | 540.3          |
| Information                          | 51.4           | 51.2           | 50.1           |
| Financial Activities                 | 177.5          | 178.0          | 177.0          |
| Professional and Business Services   | 376.9          | 374.2          | 369.7          |
| Educational and Health Services      | 538.8          | 534.5          | 535.0          |
| Leisure and Hospitality              | 264.7          | 264.2          | 262.0          |
| Other Services                       | 118.3          | 117.3          | 118.0          |
| Government                           | 427.6          | 424.6          | 424.6          |

Source: Department of Employment and Economic Development Current Employment Statistics, 2017.

# Regional Analysis

## Minneapolis-St. Paul-Bloomington Metropolitan Statistical Area (MSA)

Employment in the Minneapolis-St. Paul-Bloomington MSA increased by 27,024 (1.4 percent) in April. Significant over-the-month increases are very common in April as warm-weather employment has generally begun to ramp up, but schools have yet to let out for the summer. As would be expected, the two supersectors primarily responsible for driving this growth were Mining, Logging, and Construction (up 6,133 or 8.7 percent) and Leisure and Hospitality (up 5,920 or 3.5 percent), although every supersector save Information (down 23 jobs or 0.1 percent) grew on the month. On an annual basis the metro area added 29,104 jobs (1.5 percent). The net jobs added would represent roughly 84 percent of job growth in the state. However, April's increase is actually a decline from the 2.1 percent over-the-year growth the area saw in March, although that seems to have more to do with late-starting spring job growth last year than with any irregularities this year. As has been the case for some time, Educational and Health Services added the most jobs on the year, up 12,783 (4 percent). Leisure and Hospitality was the only supersector in the area to have negative growth on the year, off by 3,843 (2.1 percent), with Accommodation and Food Services shedding 5,034 jobs (3.4 percent) and Arts, Entertainment, and Recreation adding 1,191 (3.7 percent).

## Duluth-Superior MSA

The Duluth-Superior MSA added 829 jobs (0.6 percent) in April. The most dramatic growth came in Leisure and Hospitality, which added 682 jobs (5.4 percent). Significant growth in the supersector is common this time of year. Trade, Transportation, and Utilities lost 241 jobs

(1 percent) on the month, with the entirety of those losses coming in the Retail Trade component (down 262 or 1.7 percent). The other two component sectors saw small growth. Annually Duluth added 298 jobs (0.2 percent). By far the largest gains, in both absolute and proportional terms, came in Mining, Logging, and Construction, which added 881 jobs or 10.9 percent. This was the fourth consecutive month where the supersector had over 10 percent over-the-year growth on the heels of consistent losses through 2016 and late 2015.

## Rochester MSA

Employment in the Rochester MSA was up by 1,243 (1.1 percent) in April. Mining, Logging, and Construction added 633 jobs (18 percent). While growth in the supersector is common this time of year, this was its fastest over-the-month growth since April of 2010. Professional and Business Services also showed strong growth, adding 226 jobs (4.2 percent), its largest over-the-month growth since 2012. Annually Rochester added just 911 jobs (0.8 percent). Although this is up from the 0.6 percent annual growth the MSA showed in March, it remains well below the statewide rate of 1.2 percent growth on the year. Financial Activities grew by 119 jobs (4.6 percent), the biggest proportional change, and Educational and Health Services added 1,117 jobs (2.3 percent), the largest addition of actual jobs in the MSA.

## St. Cloud MSA

Employment in the St. Cloud MSA was up by 2,299 (2.1 percent) in April, after having been flat in March. The 2.1 percent growth mark was by far the largest posted by any MSA in the state. Mining,

Logging, and Construction added 545 jobs (9 percent), Professional and Business Services added 305 (3.6 percent), and Leisure and Hospitality added 684 (8.4 percent). Annually St. Cloud added 1,484 jobs (1.4 percent). The annual growth rate of the MSA outpaced the state's 1.2 percent growth. Mining, Logging, and Construction added 558 jobs (9.2 percent) on the year, and Educational and Health Services added 1,094 (5 percent).

## Mankato-North Mankato MSA

The Mankato-North Mankato MSA added 503 jobs (0.9 percent) in April. Every published industry group saw gains, with goods producers adding 306 jobs (3.2 percent) and service providers adding 197 (0.4 percent). Government employment was largely flat, adding just six jobs (0.1 percent). Annually Mankato lost 142 jobs (0.2 percent). It joined Grand Forks-East Grand Forks as the only MSAs in the state to lose jobs over the year.

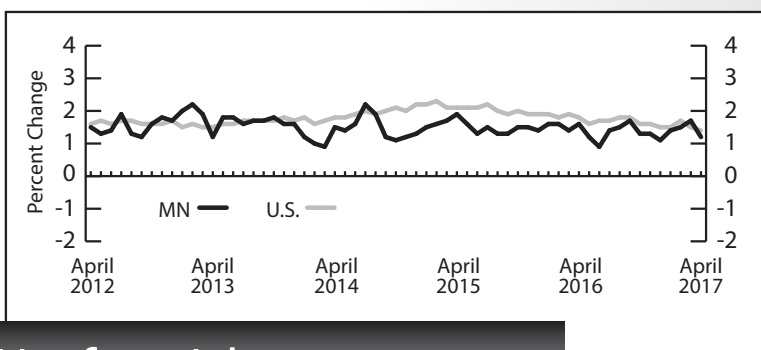
## Fargo-Moorhead MSA

The Fargo-Moorhead MSA added 1,417 jobs (1 percent) in April. Mining, Logging, and Construction added 762 jobs (9.4 percent), and Professional and Business Services added 493 (3.3 percent). Annually the Fargo-Moorhead area added 2,012 jobs (1.4 percent), making it one of only three MSAs to match or exceed the state growth rate. The fastest growth occurred in Educational and Health Services, which added 1,181 jobs (5.2 percent).

## Grand Forks-East Grand Forks MSA

The Grand Forks-East Grand Forks MSA added 118 jobs (0.2 percent) in April. This was the smallest monthly gain of any MSA in the state for the month. The uncharacteristic weakness may have been in part from the decline of 137 (4.5 percent) in Mining, Logging, and Construction. Not only was this the only MSA to lose jobs in the supersector, every other MSA grew by at least 2 percent on the month, and the state as a whole saw 10.1 percent more jobs in the supersector. Annually the Grand Forks-East Grand Forks area lost 55 jobs (0.1 percent). It joined Mankato as the only MSAs in the state to lose jobs over the year. Mining, Logging, and Construction was once again a notable culprit, shedding 317 jobs (9.8 percent) on the year.

Source: Department of Employment and Economic Development, Current Employment Statistics, 2017; Bureau of Labor Statistics, U.S. Department of Labor, Current Employment Statistics, 2017.



## Total Nonfarm Jobs U.S. and MN over-the-year percent change

by Nick Dobbins

# Employer Survey of Minnesota Nonfarm Payroll Jobs, Hours and Earnings

Numbers are unadjusted.

Note: State, regional and local estimates from past months (for all tables pages 11-13) may be revised from figures previously published.

## Industry

| Industry  | Jobs*<br>(Thousands) |                |                | Percent Change:<br>From** |             | Production Workers Hours and Earnings |                 |                      |             |                         |              |
|---|----------------------|----------------|----------------|---------------------------|-------------|---------------------------------------|-----------------|----------------------|-------------|-------------------------|--------------|
|   | Mar                  | Feb            | Mar            | Feb                       | Mar         | Average Weekly Earnings               |                 | Average Weekly Hours |             | Average Hourly Earnings |              |
|   | 2017                 | 2017           | 2016           | 2017                      | 2016        | Mar 2017                              | Mar 2016        | Mar 2017             | Mar 2016    | Mar 2017                | Mar 2016     |
| <b>TOTAL NONFARM WAGE AND SALARY</b>                      | <b>2,920.6</b>       | <b>2,880.3</b> | <b>2,885.9</b> | <b>1.4%</b>               | <b>1.2%</b> | —                                     | —               | —                    | —           | —                       | —            |
| <b>GOODS-PRODUCING</b>                                    | <b>438.4</b>         | <b>425.3</b>   | <b>434.2</b>   | <b>3.1</b>                | <b>1.0</b>  | —                                     | —               | —                    | —           | —                       | —            |
| <b>Mining, Logging, and Construction</b>                  | <b>6.5</b>           | <b>6.6</b>     | <b>5.7</b>     | <b>-0.7</b>               | <b>13.7</b> | —                                     | —               | —                    | —           | —                       | —            |
| <b>Mining and Logging</b>                                 | <b>122.0</b>         | <b>110.8</b>   | <b>118.2</b>   | <b>10.1</b>               | <b>3.2</b>  | —                                     | —               | —                    | —           | —                       | —            |
| <b>Construction</b>                                       | <b>115.5</b>         | <b>104.3</b>   | <b>112.5</b>   | <b>10.8</b>               | <b>2.7</b>  | —                                     | —               | —                    | —           | —                       | —            |
| Specialty Trade Contractors                               | 76.2                 | 70.7           | 72.3           | 7.8                       | 5.4         | \$1,210.15                            | \$1,180.30      | 37.9                 | 38.8        | \$31.93                 | \$30.42      |
| <b>Manufacturing</b>                                      | <b>316.4</b>         | <b>314.5</b>   | <b>316.0</b>   | <b>0.6</b>                | <b>0.1</b>  | <b>842.95</b>                         | <b>816.72</b>   | <b>41.2</b>          | <b>41.0</b> | <b>20.46</b>            | <b>19.92</b> |
| Durable Goods   | 199.8                | 198.7          | 201.5          | 0.5                       | -0.8        | 866.02                                | 821.60          | 41.2                 | 40.0        | 21.02                   | 20.54        |
| Wood Product Manufacturing                                | 11.1                 | 10.9           | 11.1           | 2.3                       | 0.4         | —                                     | —               | —                    | —           | —                       | —            |
| Fabricated Metal Production                               | 41.5                 | 41.5           | 42.4           | 0.1                       | -2.1        | —                                     | —               | —                    | —           | —                       | —            |
| Machinery Manufacturing                                   | 32.3                 | 32.4           | 33.2           | -0.3                      | -2.8        | —                                     | —               | —                    | —           | —                       | —            |
| Computer and Electronic Product                           | 45.6                 | 45.6           | 45.6           | 0.0                       | 0.0         | —                                     | —               | —                    | —           | —                       | —            |
| Navigational, Measuring, Electromedical and Control       | 26.4                 | 26.4           | 25.9           | 0.1                       | 2.0         | —                                     | —               | —                    | —           | —                       | —            |
| Transportation Equipment                                  | 10.5                 | 10.5           | 10.9           | -0.4                      | -4.1        | —                                     | —               | —                    | —           | —                       | —            |
| Medical Equipment and Supplies Manufacturing              | 16.2                 | 16.2           | 15.7           | 0.1                       | 3.1         | —                                     | —               | —                    | —           | —                       | —            |
| Nondurable Goods  | 116.6                | 115.8          | 114.6          | 0.7                       | 1.8         | 806.70                                | 811.49          | 41.2                 | 42.8        | 19.58                   | 18.96        |
| Food Manufacturing  | 45.6                 | 45.6           | 45.1           | 0.0                       | 1.1         | —                                     | —               | —                    | —           | —                       | —            |
| <b>SERVICE-PROVIDING</b>                                  | <b>2,482.2</b>       | <b>2,454.9</b> | <b>2,451.7</b> | <b>1.1</b>                | <b>1.2</b>  | —                                     | —               | —                    | —           | —                       | —            |
| <b>Trade, Transportation, and Utilities</b>               | <b>530.3</b>         | <b>527.4</b>   | <b>528.4</b>   | <b>0.6</b>                | <b>0.4</b>  | —                                     | —               | —                    | —           | —                       | —            |
| Wholesale Trade   | 131.1                | 130.7          | 132.4          | 0.3                       | -1.0        | 999.10                                | 883.50          | 39.9                 | 38.0        | 25.04                   | 23.25        |
| Retail Trade  | 297.2                | 295.7          | 294.7          | 0.5                       | 0.8         | 426.10                                | 413.20          | 28.2                 | 27.9        | 15.11                   | 14.81        |
| Motor Vehicle and Parts                                   | 35.0                 | 35.4           | 34.9           | -1.0                      | 0.3         | —                                     | —               | —                    | —           | —                       | —            |
| Building Material and Garden Equipment                    | 26.9                 | 25.1           | 27.0           | 7.2                       | -0.4        | —                                     | —               | —                    | —           | —                       | —            |
| Food and Beverage Stores                                  | 54.3                 | 54.1           | 52.2           | 0.4                       | 4.0         | —                                     | —               | —                    | —           | —                       | —            |
| Gasoline Stations   | 25.0                 | 24.7           | 24.7           | 1.5                       | 1.3         | —                                     | —               | —                    | —           | —                       | —            |
| General Merchandise Stores                                | 59.0                 | 58.8           | 59.7           | 0.3                       | -1.2        | 381.19                                | 333.74          | 29.3                 | 28.5        | 13.01                   | 11.71        |
| Transportation, Warehouse, Utilities                      | 102.1                | 101.0          | 101.3          | 1.1                       | 0.8         | —                                     | —               | —                    | —           | —                       | —            |
| Transportation and Warehousing                            | 89.7                 | 88.7           | 88.7           | 1.2                       | 1.1         | 735.92                                | 702.45          | 35.5                 | 34.4        | 20.73                   | 20.42        |
| <b>Information</b>  | <b>51.3</b>          | <b>51.3</b>    | <b>50.2</b>    | <b>0.0</b>                | <b>2.2</b>  | <b>987.17</b>                         | <b>1,020.83</b> | <b>33.6</b>          | <b>36.8</b> | <b>29.38</b>            | <b>27.74</b> |
| Publishing Industries                                     | 18.7                 | 18.7           | 19.1           | 0.0                       | -2.1        | —                                     | —               | —                    | —           | —                       | —            |
| Telecommunications  | 11.8                 | 11.9           | 12.1           | -0.3                      | -2.2        | —                                     | —               | —                    | —           | —                       | —            |
| <b>Financial Activities</b>                               | <b>176.6</b>         | <b>176.8</b>   | <b>174.4</b>   | <b>-0.1</b>               | <b>1.3</b>  | —                                     | —               | —                    | —           | —                       | —            |
| Finance and Insurance                                     | 143.8                | 143.6          | 140.4          | 0.2                       | 2.4         | 1,171.56                              | 1,025.90        | 38.5                 | 36.6        | 30.43                   | 28.03        |
| Credit Intermediation                                     | 63.3                 | 63.3           | 61.9           | 0.1                       | 2.3         | 817.91                                | 767.99          | 36.4                 | 35.1        | 22.47                   | 21.88        |
| Securities, Commodity Contracts, and Other                | 19.7                 | 19.6           | 19.5           | 0.5                       | 1.0         | —                                     | —               | —                    | —           | —                       | —            |
| Insurance Carriers and Related                            | 60.8                 | 60.7           | 59.0           | 0.1                       | 3.0         | —                                     | —               | —                    | —           | —                       | —            |
| Real Estate and Rental and Leasing                        | 32.8                 | 33.2           | 34.0           | -1.2                      | -3.3        | —                                     | —               | —                    | —           | —                       | —            |
| <b>Professional and Business Services</b>                 | <b>373.4</b>         | <b>366.0</b>   | <b>370.5</b>   | <b>2.0</b>                | <b>0.8</b>  | —                                     | —               | —                    | —           | —                       | —            |
| Professional, Scientific, and Technical Services          | 159.7                | 157.8          | 158.9          | 1.2                       | 0.5         | —                                     | —               | —                    | —           | —                       | —            |
| Legal Services  | 18.1                 | 18.0           | 18.1           | 0.5                       | 0.0         | —                                     | —               | —                    | —           | —                       | —            |
| Accounting, Tax Preparation                               | 19.5                 | 19.7           | 18.9           | -0.6                      | 3.6         | —                                     | —               | —                    | —           | —                       | —            |
| Computer Systems Design                                   | 36.5                 | 37.3           | 37.5           | -2.2                      | -2.5        | —                                     | —               | —                    | —           | —                       | —            |
| Management of Companies and Enterprises                   | 79.1                 | 78.8           | 77.7           | 0.4                       | 1.8         | —                                     | —               | —                    | —           | —                       | —            |
| Administrative and Support Services                       | 134.5                | 129.5          | 133.9          | 3.9                       | 0.5         | —                                     | —               | —                    | —           | —                       | —            |
| <b>Educational and Health Services</b>                    | <b>541.9</b>         | <b>536.8</b>   | <b>523.0</b>   | <b>0.9</b>                | <b>3.6</b>  | —                                     | —               | —                    | —           | —                       | —            |
| Educational Services                                      | 75.7                 | 73.9           | 72.0           | 2.4                       | 5.1         | —                                     | —               | —                    | —           | —                       | —            |
| Health Care and Social Assistance                         | 466.3                | 462.9          | 451.0          | 0.7                       | 3.4         | —                                     | —               | —                    | —           | —                       | —            |
| Ambulatory Health Care                                    | 154.5                | 152.7          | 147.9          | 1.2                       | 4.4         | 1,393.73                              | 1,297.43        | 36.6                 | 36.1        | 38.08                   | 35.94        |
| Offices of Physicians                                     | 73.1                 | 72.8           | 70.4           | 0.4                       | 3.8         | —                                     | —               | —                    | —           | —                       | —            |
| Hospitals   | 107.7                | 107.6          | 106.2          | 0.0                       | 1.4         | —                                     | —               | —                    | —           | —                       | —            |
| Nursing and Residential Care Facilities                   | 108.7                | 108.4          | 106.7          | 0.3                       | 1.8         | 489.16                                | 461.36          | 29.9                 | 29.2        | 16.36                   | 15.80        |
| Social Assistance   | 95.4                 | 94.2           | 90.1           | 1.3                       | 5.9         | —                                     | —               | —                    | —           | —                       | —            |
| <b>Leisure and Hospitality</b>                            | <b>257.3</b>         | <b>248.8</b>   | <b>259.7</b>   | <b>3.4</b>                | <b>-0.9</b> | —                                     | —               | —                    | —           | —                       | —            |
| Arts, Entertainment, and Recreation                       | 39.8                 | 36.2           | 40.2           | 10.1                      | -1.0        | —                                     | —               | —                    | —           | —                       | —            |
| Accommodation and Food Services                           | 217.5                | 212.6          | 219.5          | 2.3                       | -0.9        | —                                     | —               | —                    | —           | —                       | —            |
| Food Services and Drinking Places                         | 193.3                | 189.9          | 194.0          | 1.8                       | -0.4        | 269.28                                | 263.49          | 19.8                 | 20.3        | 13.6                    | 12.98        |
| <b>Other Services</b>                                     | <b>118.2</b>         | <b>117.2</b>   | <b>114.9</b>   | <b>0.8</b>                | <b>2.8</b>  | —                                     | —               | —                    | —           | —                       | —            |
| Religious, Grantmaking, Civic, Professional Organizations | 64.9                 | 65.1           | 63.8           | -0.2                      | 1.7         | —                                     | —               | —                    | —           | —                       | —            |
| <b>Government</b>   | <b>433.2</b>         | <b>430.6</b>   | <b>430.5</b>   | <b>0.6</b>                | <b>0.6</b>  | —                                     | —               | —                    | —           | —                       | —            |
| Federal Government  | 32.1                 | 31.9           | 31.5           | 0.6                       | 1.8         | —                                     | —               | —                    | —           | —                       | —            |
| State Government  | 103.7                | 102.2          | 105.6          | 1.4                       | -1.8        | —                                     | —               | —                    | —           | —                       | —            |
| State Government Education                                | 64.2                 | 63.0           | 67.0           | 2.0                       | -4.1        | —                                     | —               | —                    | —           | —                       | —            |
| Local Government  | 297.4                | 296.5          | 293.4          | 0.3                       | 1.4         | —                                     | —               | —                    | —           | —                       | —            |
| Local Government Education                                | 152.9                | 153.6          | 149.4          | -0.4                      | 2.4         | —                                     | —               | —                    | —           | —                       | —            |

Note: Not all industry subgroups are shown for every major industry category.

\* Totals may not add because of rounding.

\*\* Percent change based on unrounded numbers.

Source: Department of Employment and Economic Development, Current Employment Statistics, 2017.

# Employer Survey of Twin Cities Nonfarm Payroll Jobs, Hours and Earnings

Numbers are unadjusted.

Note: State, regional and local estimates from past months (for all tables pages 11-13) may be revised from figures previously published.

| Industry  | Jobs*          |                |                | Percent Change |             | Production Workers Hours and Earnings |               |                      |             |                         |              |
|---|----------------|----------------|----------------|----------------|-------------|---------------------------------------|---------------|----------------------|-------------|-------------------------|--------------|
|   | (Thousands)    |                |                | From**         |             | Average Weekly Earnings               |               | Average Weekly Hours |             | Average Hourly Earnings |              |
|   | Apr 2017       | Mar 2017       | Apr 2016       | Mar 2017       | Apr 2016    | Apr 2017                              | Apr 2016      | Apr 2017             | Apr 2016    | Apr 2017                | Apr 2016     |
| <b>TOTAL NONFARM WAGE AND SALARY</b>                      | <b>1,981.5</b> | <b>1,954.5</b> | <b>1,952.4</b> | <b>1.4%</b>    | <b>1.5%</b> | —                                     | —             | —                    | —           | —                       | —            |
| <b>GOODS-PRODUCING</b>                                    | <b>274.6</b>   | <b>267.3</b>   | <b>271.3</b>   | <b>2.7</b>     | <b>1.2</b>  | —                                     | —             | —                    | —           | —                       | —            |
| <b>Mining, Logging, and Construction</b>                  | <b>76.7</b>    | <b>70.6</b>    | <b>76.0</b>    | <b>8.7</b>     | <b>0.9</b>  | —                                     | —             | —                    | —           | —                       | —            |
| Construction of Buildings                                 | 16.4           | 15.9           | 16.5           | 3.5            | -0.6        | —                                     | —             | —                    | —           | —                       | —            |
| Specialty Trade Contractors                               | 53.6           | 49.5           | 50.7           | 8.3            | 5.7         | \$1,270.13                            | \$1,269.84    | 37.6                 | 39.0        | \$33.78                 | \$32.56      |
| <b>Manufacturing</b>                                      | <b>197.9</b>   | <b>196.7</b>   | <b>195.3</b>   | <b>0.6</b>     | <b>1.3</b>  | <b>898.22</b>                         | <b>868.60</b> | <b>41.7</b>          | <b>41.5</b> | <b>21.54</b>            | <b>20.93</b> |
| Durable Goods   | 134.7          | 134.3          | 133.1          | 0.3            | 1.2         | 903.04                                | 860.26        | 41.5                 | 41.2        | 21.76                   | 20.88        |
| Fabricated Metal Production                               | 29.0           | 29.0           | 29.4           | 0.2            | -1.1        | —                                     | —             | —                    | —           | —                       | —            |
| Machinery Manufacturing                                   | 20.1           | 20.1           | 20.3           | -0.1           | -1.4        | —                                     | —             | —                    | —           | —                       | —            |
| Computer and Electronic Product                           | 37.1           | 37.1           | 36.8           | 0.1            | 0.8         | —                                     | —             | —                    | —           | —                       | —            |
| Navigational, Measuring, Electromedical and Control       | 24.8           | 24.8           | 24.2           | 0.1            | 2.3         | —                                     | —             | —                    | —           | —                       | —            |
| Medical Equipment and Supplies Manufacturing              | 14.7           | 14.7           | 14.3           | 0.4            | 2.8         | —                                     | —             | —                    | —           | —                       | —            |
| Nondurable Goods  | 63.2           | 62.4           | 62.2           | 1.2            | 1.6         | 887.88                                | 887.04        | 42.0                 | 42.2        | 21.14                   | 21.02        |
| Food Manufacturing  | 15.1           | 14.9           | 14.6           | 0.9            | 3.4         | —                                     | —             | —                    | —           | —                       | —            |
| Printing and Related                                      | 14.7           | 14.7           | 15.0           | -0.3           | -2.2        | —                                     | —             | —                    | —           | —                       | —            |
| <b>SERVICE-PROVIDING</b>                                  | <b>1,706.9</b> | <b>1,687.2</b> | <b>1,681.1</b> | <b>1.2</b>     | <b>1.5</b>  | —                                     | —             | —                    | —           | —                       | —            |
| <b>Trade, Transportation, and Utilities</b>               | <b>354.4</b>   | <b>352.2</b>   | <b>352.3</b>   | <b>0.6</b>     | <b>0.6</b>  | —                                     | —             | —                    | —           | —                       | —            |
| Wholesale Trade   | 96.8           | 96.5           | 96.7           | 0.4            | 0.1         | 1,002.10                              | 874.31        | 40.1                 | 37.8        | 24.99                   | 23.13        |
| Merchant Wholesalers - Durable Goods                      | 48.4           | 48.4           | 48.5           | 0.0            | -0.1        | —                                     | —             | —                    | —           | —                       | —            |
| Merchant Wholesalers - Nondurable Goods                   | 27.9           | 27.6           | 28.0           | 1.1            | -0.1        | —                                     | —             | —                    | —           | —                       | —            |
| Retail Trade  | 186.1          | 185.8          | 186.3          | 0.1            | -0.2        | 451.65                                | 444.28        | 29.5                 | 28.7        | 15.31                   | 15.48        |
| Food and Beverage Stores                                  | 33.5           | 33.5           | 31.2           | 0.1            | 7.3         | —                                     | —             | —                    | —           | —                       | —            |
| General Merchandise Stores                                | 36.1           | 36.1           | 37.0           | 0.2            | -2.3        | 366.90                                | 339.28        | 30.0                 | 29.4        | 12.23                   | 11.54        |
| Transportation, Warehouse, Utilities                      | 71.5           | 69.9           | 69.2           | 2.3            | 3.3         | —                                     | —             | —                    | —           | —                       | —            |
| Utilities   | 7.6            | 7.5            | 7.6            | 0.4            | -0.7        | —                                     | —             | —                    | —           | —                       | —            |
| Transportation and Warehousing                            | 64.0           | 62.4           | 61.6           | 2.5            | 3.8         | 709.92                                | 739.57        | 34.8                 | 36.2        | 20.40                   | 20.43        |
| <b>Information</b>  | <b>38.1</b>    | <b>38.1</b>    | <b>37.6</b>    | <b>-0.1</b>    | <b>1.4</b>  | —                                     | —             | —                    | —           | —                       | —            |
| Publishing Industries                                     | 14.7           | 14.8           | 15.0           | -0.6           | -2.2        | —                                     | —             | —                    | —           | —                       | —            |
| Telecommunications  | 8.7            | 8.7            | 8.7            | -0.2           | -0.2        | —                                     | —             | —                    | —           | —                       | —            |
| <b>Financial Activities</b>                               | <b>143.2</b>   | <b>143.0</b>   | <b>140.6</b>   | <b>0.1</b>     | <b>1.8</b>  | —                                     | —             | —                    | —           | —                       | —            |
| Finance and Insurance                                     | 116.0          | 115.5          | 112.9          | 0.4            | 2.7         | 1,262.94                              | 1,027.82      | 38.8                 | 35.9        | 32.55                   | 28.63        |
| Credit Intermediation                                     | 47.2           | 47.0           | 46.0           | 0.3            | 2.6         | —                                     | —             | —                    | —           | —                       | —            |
| Securities, Commodity Contracts, and Other                | 17.6           | 17.5           | 17.5           | 0.5            | 0.4         | —                                     | —             | —                    | —           | —                       | —            |
| Insurance Carriers and Related                            | 51.2           | 51.0           | 49.5           | 0.4            | 3.6         | —                                     | —             | —                    | —           | —                       | —            |
| Real Estate and Rental and Leasing                        | 27.2           | 27.5           | 27.7           | -1.1           | -1.6        | —                                     | —             | —                    | —           | —                       | —            |
| <b>Professional and Business Services</b>                 | <b>320.8</b>   | <b>316.8</b>   | <b>317.4</b>   | <b>1.2</b>     | <b>1.1</b>  | —                                     | —             | —                    | —           | —                       | —            |
| Professional, Scientific, and Technical Services          | 140.3          | 140.0          | 138.9          | 0.3            | 1.1         | —                                     | —             | —                    | —           | —                       | —            |
| Legal Services  | 15.5           | 15.4           | 15.4           | 0.3            | 0.1         | —                                     | —             | —                    | —           | —                       | —            |
| Architectural, Engineering, and Related                   | 18.6           | 18.3           | 18.0           | 1.8            | 3.2         | —                                     | —             | —                    | —           | —                       | —            |
| Computer Systems Design                                   | 33.5           | 33.9           | 34.9           | -1.2           | -4.0        | —                                     | —             | —                    | —           | —                       | —            |
| Management of Companies and Enterprises                   | 71.5           | 71.4           | 70.9           | 0.2            | 0.8         | —                                     | —             | —                    | —           | —                       | —            |
| Administrative and Support Services                       | 108.9          | 105.5          | 107.6          | 3.3            | 1.3         | —                                     | —             | —                    | —           | —                       | —            |
| Employment Services                                       | 49.4           | 48.1           | 49.9           | 2.8            | -1.0        | —                                     | —             | —                    | —           | —                       | —            |
| <b>Educational and Health Services</b>                    | <b>336.3</b>   | <b>331.6</b>   | <b>323.5</b>   | <b>1.4</b>     | <b>4.0</b>  | —                                     | —             | —                    | —           | —                       | —            |
| Educational Services                                      | 50.0           | 48.5           | 48.4           | 3.1            | 3.3         | —                                     | —             | —                    | —           | —                       | —            |
| Health Care and Social Assistance                         | 286.3          | 283.1          | 275.2          | 1.1            | 4.1         | —                                     | —             | —                    | —           | —                       | —            |
| Ambulatory Health Care                                    | 93.5           | 92.2           | 88.5           | 1.4            | 5.6         | —                                     | —             | —                    | —           | —                       | —            |
| Hospitals   | 62.9           | 62.8           | 62.7           | 0.1            | 0.4         | —                                     | —             | —                    | —           | —                       | —            |
| Nursing and Residential Care Facilities                   | 60.8           | 60.3           | 59.3           | 0.9            | 2.6         | —                                     | —             | —                    | —           | —                       | —            |
| Social Assistance   | 69.1           | 67.8           | 64.7           | 1.9            | 6.8         | —                                     | —             | —                    | —           | —                       | —            |
| <b>Leisure and Hospitality</b>                            | <b>176.6</b>   | <b>170.6</b>   | <b>180.4</b>   | <b>3.5</b>     | <b>-2.1</b> | —                                     | —             | —                    | —           | —                       | —            |
| Arts, Entertainment, and Recreation                       | 33.3           | 30.6           | 32.1           | 8.8            | 3.7         | —                                     | —             | —                    | —           | —                       | —            |
| Accommodation and Food Services                           | 143.3          | 140.1          | 148.3          | 2.3            | -3.4        | 299.83                                | 290.86        | 21.1                 | 21.2        | 14.21                   | 13.72        |
| Food Services and Drinking Places                         | 131.5          | 128.6          | 134.6          | 2.3            | -2.3        | 291.90                                | 274.29        | 20.6                 | 20.5        | 14.17                   | 13.38        |
| <b>Other Services</b>                                     | <b>81.0</b>    | <b>80.8</b>    | <b>78.8</b>    | <b>0.4</b>     | <b>2.9</b>  | —                                     | —             | —                    | —           | —                       | —            |
| Repair and Maintenance                                    | 15.2           | 15.2           | 14.8           | 0.1            | 2.6         | —                                     | —             | —                    | —           | —                       | —            |
| Religious, Grantmaking, Civic, Professional Organizations | 41.9           | 42.1           | 41.1           | -0.5           | 1.9         | —                                     | —             | —                    | —           | —                       | —            |
| <b>Government</b>   | <b>256.6</b>   | <b>254.0</b>   | <b>250.6</b>   | <b>1.0</b>     | <b>2.4</b>  | —                                     | —             | —                    | —           | —                       | —            |
| Federal Government  | 21.4           | 21.3           | 20.9           | 0.2            | 2.1         | —                                     | —             | —                    | —           | —                       | —            |
| State Government  | 68.7           | 67.7           | 67.3           | 1.5            | 2.1         | —                                     | —             | —                    | —           | —                       | —            |
| State Government Education                                | 42.8           | 41.7           | 41.7           | 2.6            | 2.5         | —                                     | —             | —                    | —           | —                       | —            |
| Local Government  | 166.5          | 165.0          | 162.3          | 0.9            | 2.6         | —                                     | —             | —                    | —           | —                       | —            |
| Local Government Education                                | 96.0           | 95.5           | 92.7           | 0.6            | 3.5         | —                                     | —             | —                    | —           | —                       | —            |

Note: Not all industry subgroups are shown for every major industry category.

\* Totals may not add because of rounding.

\*\* Percent change based on unrounded numbers.

Source: Department of Employment and Economic Development, Current Employment Statistics, 2017.

# Employer Survey

## Industry

|                                      | Duluth-Superior MSA |                |                |             |             | Rochester MSA  |                |                |             |             |
|--------------------------------------|---------------------|----------------|----------------|-------------|-------------|----------------|----------------|----------------|-------------|-------------|
|                                      | Jobs                |                |                | % Chg. From |             | Jobs           |                |                | % Chg. From |             |
|                                      | Apr 2017            | Mar 2017       | Apr 2016       | Mar 2017    | Apr 2016    | Apr 2017       | Mar 2017       | Apr 2016       | Mar 2017    | Apr 2016    |
| <b>TOTAL NONFARM WAGE AND SALARY</b> | <b>135,367</b>      | <b>134,538</b> | <b>135,069</b> | <b>0.6%</b> | <b>0.2%</b> | <b>118,985</b> | <b>117,742</b> | <b>118,074</b> | <b>1.1%</b> | <b>0.8%</b> |
| <b>GOODS-PRODUCING</b>               | <b>16,186</b>       | <b>16,034</b>  | <b>15,322</b>  | <b>0.9</b>  | <b>5.6</b>  | <b>14,808</b>  | <b>13,998</b>  | <b>14,807</b>  | <b>5.8</b>  | <b>0.0</b>  |
| Mining, Logging, and Construction    | 8,955               | 8,782          | 8,074          | 2.0         | 10.9        | 4,146          | 3,513          | 4,297          | 18.0        | -3.5        |
| Manufacturing                        | 7,231               | 7,252          | 7,248          | -0.3        | -0.2        | 10,662         | 10,485         | 10,510         | 1.7         | 1.4         |
| <b>SERVICE-PROVIDING</b>             | <b>119,181</b>      | <b>118,504</b> | <b>119,747</b> | <b>0.6</b>  | <b>-0.5</b> | <b>104,177</b> | <b>103,744</b> | <b>103,267</b> | <b>0.4</b>  | <b>0.9</b>  |
| Trade, Transportation, and Utilities | 24,548              | 24,789         | 24,770         | -1.0        | -0.9        | 18,185         | 18,159         | 18,268         | 0.1         | -0.5        |
| Wholesale Trade                      | 3,213               | 3,204          | 3,202          | 0.3         | 0.3         | 2,742          | 2,669          | 2,887          | 2.7         | -5.0        |
| Retail Trade                         | 15,253              | 15,515         | 15,287         | -1.7        | -0.2        | 12,599         | 12,673         | 12,523         | -0.6        | 0.6         |
| Transportation, Warehouse, Utilities | 6,082               | 6,070          | 6,281          | 0.2         | -3.2        | 2,844          | 2,817          | 2,858          | 1.0         | -0.5        |
| Information                          | 1,361               | 1,377          | 1,426          | -1.2        | -4.6        | 1,899          | 1,882          | 1,943          | 0.9         | -2.3        |
| Financial Activities                 | 5,886               | 5,965          | 5,799          | -1.3        | 1.5         | 2,734          | 2,734          | 2,615          | 0.0         | 4.6         |
| Professional and Business Services   | 8,015               | 8,080          | 8,287          | -0.8        | -3.3        | 5,622          | 5,396          | 5,752          | 4.2         | -2.3        |
| Educational and Health Services      | 32,250              | 32,010         | 32,366         | 0.7         | -0.4        | 48,708         | 48,752         | 47,591         | -0.1        | 2.3         |
| Leisure and Hospitality              | 13,264              | 12,582         | 13,938         | 5.4         | -4.8        | 10,292         | 10,006         | 10,552         | 2.9         | -2.5        |
| Other Services                       | 6,238               | 6,228          | 6,049          | 0.2         | 3.1         | 4,018          | 4,024          | 3,862          | -0.1        | 4.0         |
| Government                           | 27,619              | 27,473         | 27,112         | 0.5         | 1.9         | 12,719         | 12,791         | 12,684         | -0.6        | 0.3         |

# Employer Survey

## Industry

|                                      | St. Cloud MSA  |                |                |             |             | Mankato MSA   |               |               |             |              |
|--------------------------------------|----------------|----------------|----------------|-------------|-------------|---------------|---------------|---------------|-------------|--------------|
|                                      | Jobs           |                |                | % Chg. From |             | Jobs          |               |               | % Chg. From |              |
|                                      | Apr 2017       | Mar 2017       | Apr 2016       | Mar 2017    | Apr 2016    | Apr 2017      | Mar 2017      | Apr 2016      | Mar 2017    | Apr 2016     |
| <b>TOTAL NONFARM WAGE AND SALARY</b> | <b>110,018</b> | <b>107,719</b> | <b>108,534</b> | <b>2.1%</b> | <b>1.4%</b> | <b>58,082</b> | <b>57,579</b> | <b>58,224</b> | <b>0.9</b>  | <b>-0.2%</b> |
| <b>GOODS-PRODUCING</b>               | <b>21,548</b>  | <b>20,874</b>  | <b>21,274</b>  | <b>3.2</b>  | <b>1.3</b>  | <b>9,950</b>  | <b>9,644</b>  | <b>9,672</b>  | <b>3.2</b>  | <b>2.9</b>   |
| Mining, Logging, and Construction    | 6,600          | 6,055          | 6,042          | 9.0         | 9.2         | --            | --            | --            | --          | --           |
| Manufacturing                        | 14,948         | 14,819         | 15,232         | 0.9         | -1.9        | --            | --            | --            | --          | --           |
| <b>SERVICE-PROVIDING</b>             | <b>88,470</b>  | <b>86,845</b>  | <b>87,260</b>  | <b>1.9</b>  | <b>1.4</b>  | <b>48,132</b> | <b>47,935</b> | <b>48,552</b> | <b>0.4</b>  | <b>-0.9</b>  |
| Trade, Transportation, and Utilities | 22,179         | 21,688         | 21,975         | 2.3         | 0.9         | --            | --            | --            | --          | --           |
| Wholesale Trade                      | 4,821          | 4,762          | 4,665          | 1.2         | 3.3         | --            | --            | --            | --          | --           |
| Retail Trade                         | 13,488         | 13,174         | 13,312         | 2.4         | 1.3         | --            | --            | --            | --          | --           |
| Transportation, Warehouse, Utilities | 3,870          | 3,752          | 3,998          | 3.1         | -3.2        | --            | --            | --            | --          | --           |
| Information                          | 1,597          | 1,599          | 1,634          | -0.1        | -2.3        | --            | --            | --            | --          | --           |
| Financial Activities                 | 4,775          | 4,850          | 5,018          | -1.5        | -4.8        | --            | --            | --            | --          | --           |
| Professional and Business Services   | 8,744          | 8,439          | 8,695          | 3.6         | 0.6         | --            | --            | --            | --          | --           |
| Educational and Health Services      | 22,769         | 22,670         | 21,675         | 0.4         | 5.0         | --            | --            | --            | --          | --           |
| Leisure and Hospitality              | 8,807          | 8,123          | 8,917          | 8.4         | -1.2        | --            | --            | --            | --          | --           |
| Other Services                       | 3,820          | 3,782          | 3,752          | 1.0         | 1.8         | --            | --            | --            | --          | --           |
| Government                           | 15,779         | 15,694         | 15,594         | 0.5         | 1.2         | 10,722        | 10,716        | 10,532        | 0.1         | 1.8          |

# Employer Survey

## Industry

|                                      | Fargo-Moorhead MSA |                |                |             |             | Grand Forks-East Grand Forks MSA |               |               |             |              |
|--------------------------------------|--------------------|----------------|----------------|-------------|-------------|----------------------------------|---------------|---------------|-------------|--------------|
|                                      | Jobs               |                |                | % Chg. From |             | Jobs                             |               |               | % Chg. From |              |
|                                      | Apr 2017           | Mar 2017       | Apr 2016       | Mar 2017    | Apr 2016    | Apr 2017                         | Mar 2017      | Apr 2016      | Mar 2017    | Apr 2016     |
| <b>TOTAL NONFARM WAGE AND SALARY</b> | <b>142,104</b>     | <b>140,687</b> | <b>140,092</b> | <b>1.0%</b> | <b>1.4%</b> | <b>57,211</b>                    | <b>57,093</b> | <b>57,266</b> | <b>0.2%</b> | <b>-0.1%</b> |
| <b>GOODS-PRODUCING</b>               | <b>18,773</b>      | <b>18,097</b>  | <b>18,589</b>  | <b>3.7</b>  | <b>1.0</b>  | <b>7,143</b>                     | <b>7,273</b>  | <b>7,294</b>  | <b>-1.8</b> | <b>-2.1</b>  |
| Mining, Logging, and Construction    | 8,863              | 8,101          | 8,992          | 9.4         | -1.4        | 2,928                            | 3,065         | 3,245         | -4.5        | -9.8         |
| Manufacturing                        | 9,910              | 9,996          | 9,597          | -0.9        | 3.3         | 4,215                            | 4,208         | 4,049         | 0.2         | 4.1          |
| <b>SERVICE-PROVIDING</b>             | <b>123,331</b>     | <b>122,590</b> | <b>121,503</b> | <b>0.6</b>  | <b>1.5</b>  | <b>50,068</b>                    | <b>49,820</b> | <b>49,972</b> | <b>0.5</b>  | <b>0.2</b>   |
| Trade, Transportation, and Utilities | 30,265             | 30,251         | 30,511         | 0.1         | -0.8        | 11,900                           | 11,829        | 12,134        | 0.6         | -1.9         |
| Wholesale Trade                      | 9,150              | 9,029          | 9,138          | 1.3         | 0.1         | 1,899                            | 1,844         | 2,014         | 3.0         | -5.7         |
| Retail Trade                         | 15,464             | 15,636         | 15,902         | -1.1        | -2.8        | 7,792                            | 7,748         | 7,824         | 0.6         | -0.4         |
| Transportation, Warehouse, Utilities | 5,651              | 5,586          | 5,471          | 1.2         | 3.3         | 2,209                            | 2,237         | 2,296         | -1.3        | -3.8         |
| Information                          | 3,202              | 3,228          | 3,254          | -0.8        | -1.6        | 571                              | 581           | 594           | -1.7        | -3.9         |
| Financial Activities                 | 11,374             | 11,270         | 10,916         | 0.9         | 4.2         | 1,788                            | 1,832         | 1,794         | -2.4        | -0.3         |
| Professional and Business Services   | 15,663             | 15,170         | 15,598         | 3.3         | 0.4         | 2,925                            | 2,944         | 3,035         | -0.7        | -3.6         |
| Educational and Health Services      | 23,989             | 23,878         | 22,808         | 0.5         | 5.2         | 9,799                            | 9,742         | 9,640         | 0.6         | 1.7          |
| Leisure and Hospitality              | 13,990             | 13,895         | 13,879         | 0.7         | 0.8         | 6,214                            | 5,981         | 6,257         | 3.9         | -0.7         |
| Other Services                       | 5,594              | 5,578          | 5,487          | 0.3         | 2.0         | 1,962                            | 1,948         | 1,982         | 0.7         | -1.0         |
| Government                           | 19,254             | 19,320         | 19,050         | -0.3        | 1.1         | 14,909                           | 14,963        | 14,536        | -0.4        | 2.6          |

Source: Department of Employment and Economic Development, Current Employment Statistics, and North Dakota Job Service, 2017.

# Minnesota Economic Indicators

## Highlights

The **Minnesota Index**, after surging by 0.8 percent in March, recorded another month of strong growth, climbing 0.4 percent in April. The two-month 1.2 percent advance was the largest since late 2011. The Minnesota Index has averaged 0.2 percent increase monthly since 1979. The index is designed to be a monthly proxy for the state's gross domestic product (GDP). Increasing nonfarm wage and salary employment and higher average weekly manufacturing hours fueled April's advance. The U.S. index moved 0.3 percent higher in April.

Minnesota's index is up 3.0 percent over the year, matching U.S. growth over the same period. The index has averaged 2.7 percent over-the-year growth during the last four decades, slightly higher than the 2.5 percent national average.

Minnesota's adjusted **Wage and Salary Employment** was up 0.5 percent in April as the state's employers added 15,100 workers. The private sector added 12,100 jobs while the public sector increased payroll numbers by 3,000. Hiring was highest in Educational and Health Services, Construction, Government, and Professional and Business Services. Job loss was confined to Mining and Logging, Financial Activities, and Trade, Transportation, and Utilities. Job cutbacks were small in those supersectors.

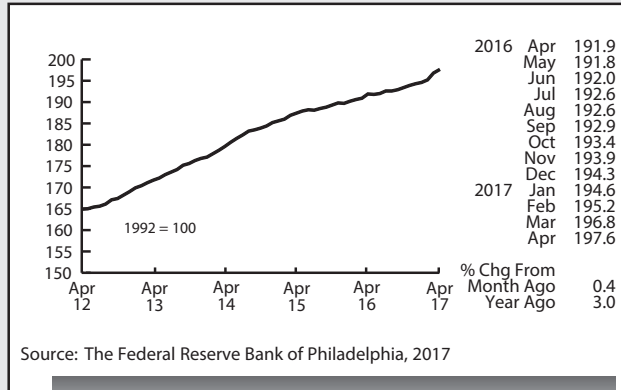
Manufacturing recorded job growth for the third consecutive month, something the sector hasn't done since

early 2015. Construction employment had its second robust hiring month over the last three months, adding 3,600 workers. Total construction employment is now only 5.4 percent below the all-time high reached in February 2006. Minnesota's unadjusted over-the-year job growth fell from 1.7 percent last month to 1.2 percent in April. The national rate also dropped, decreasing from 1.5 to 1.4 percent.

**Online Help-Wanted Ads** edged up for the second straight month to 129,000 in April. Minnesota's online job postings increased 1.7 percent while nationwide postings dipped 0.6 percent. Minnesota online job ads accounted for 2.7 percent of online U.S. job ads, the highest percent on record. Minnesota's job growth should keep pace with U.S. job growth if online help-wanted ads are a reliable proxy for labor demand and if Minnesota employers can find enough workers to hire.

Minnesota's **Purchasing Managers' Index (PMI)** slipped slightly in April to a still robust 61.2. April's reading is the second highest over the last two years. The strong reading indicates that Minnesota's manufacturers will continue to ramp up production over the next few months. The corresponding national index dipped to 54.8 while the Mid-American index rose to 61.4. The employment component of the index continued to run positive, topping 60 for the second month in a row.

Adjusted **Manufacturing Hours**, however, zigzagged up to 41.2 hours in April. The factory workweek has been above 41 hours now for three straight months. This hasn't happened in two years. A longer factory workweek combined with the higher PMI is consistent with a manufacturing sector that is rebounding from a lackluster 2016. Average weekly **Manufacturing**



Source: The Federal Reserve Bank of Philadelphia, 2017

## Minnesota Index

**Earnings** tailed off for the first time in four months in April to \$843.19. Inflation adjusted earnings, however, were higher than a year ago for the fourth consecutive month. That is a turnaround from 2015 and 2016 when inflation-adjusted earnings were lower when compared to the previous year.

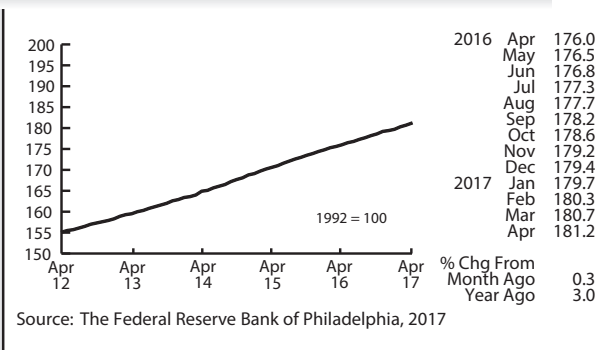
After reaching a seven-year high in March, the **Minnesota Leading Index** slipped slightly in April to 2.8. The robust reading indicates strong economic growth for Minnesota over the next six months. The leading index has averaged 1.5 since 1982 so the 2.8 reading suggest near term growth well above average.

As expected, adjusted **Residential Building Permits** declined significantly in April. Building permit levels were unusually high during the first few months of the year, most likely because of the mild winter. April's drop was probably just payback for the high numbers earlier in the year. Home-building permit numbers, however, have gotten off to the best start since 2006. Solid construction employment hiring will likely continue based on the elevated building permit level.

Adjusted **Initial Claims for Unemployment Benefits (UB)** inched down to 17,088 in April. Initial claims continue to run near record low levels when the size of the workforce is accounted for. Since 1970 Minnesota has averaged 10 initial claims per month for every 1,000 workers employed. That ratio was half the average this April with five initial claims for every 1,000 workers employed. Job growth will continue to be solid through at least the summer based on the low rate of initial claims.

by Dave Senf

## United States Index

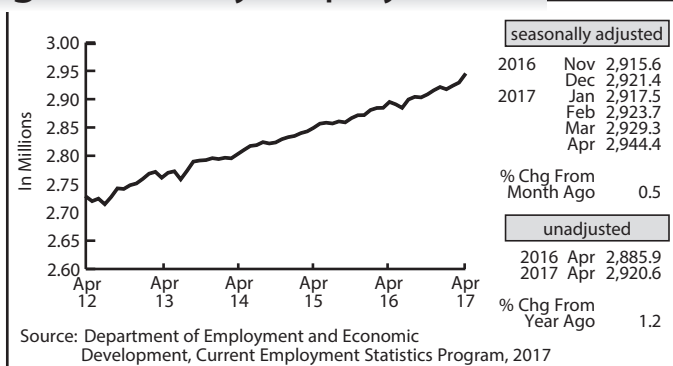


Source: The Federal Reserve Bank of Philadelphia, 2017

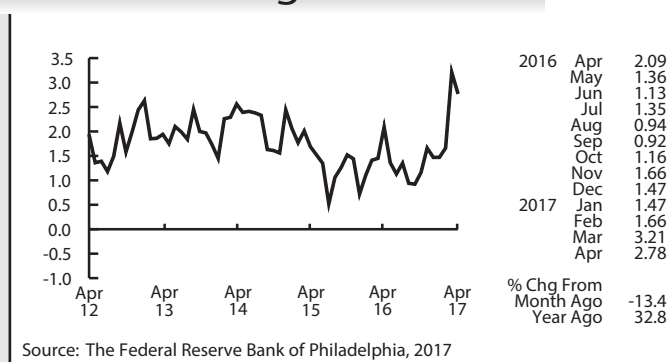
Note: All data except for Minnesota's PMI have been seasonally adjusted. See the feature article in the Minnesota Employment Review, May 2010, for more information on the Minnesota Index.

# Minnesota Economic Indicators

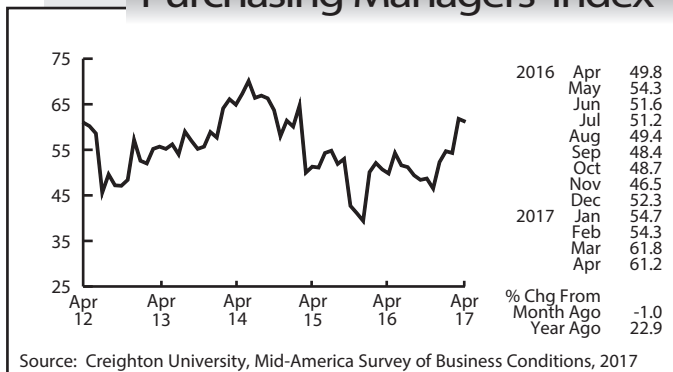
## Wage and Salary Employment



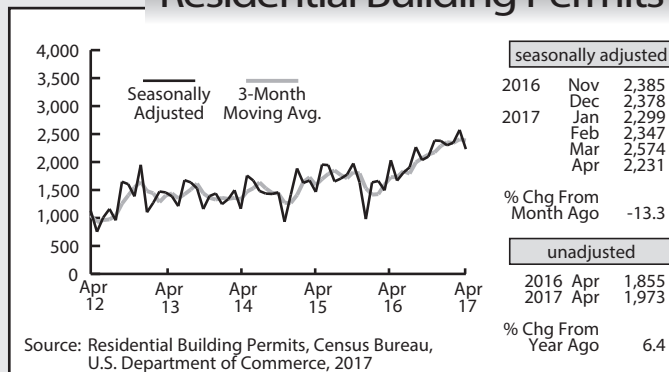
## Minnesota Leading Index



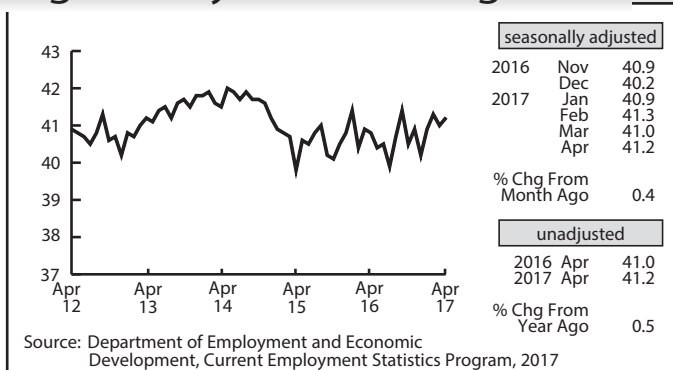
## Purchasing Managers' Index



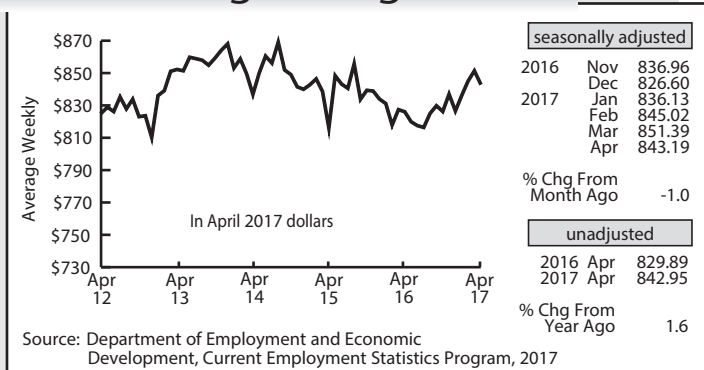
## Residential Building Permits



## Average Weekly Manufacturing Hours



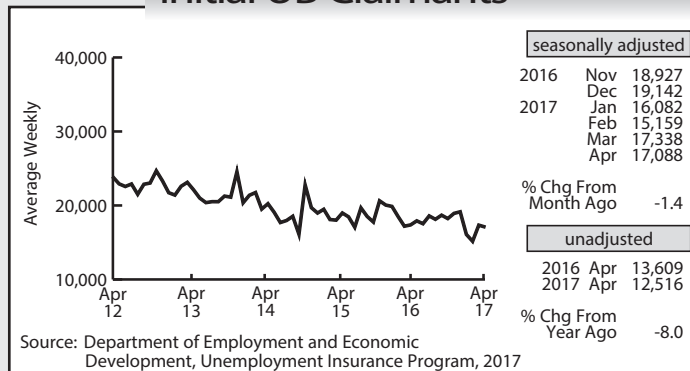
## Manufacturing Earnings



## Online Help-Wanted Advertising



## Initial UB Claimants



# Review

Minnesota Employment



## DEED

### Labor Market Information Office

1st National Bank Building  
332 Minnesota Street, Suite E200  
St. Paul, MN 55101-1351  
651.259.7400 (voice)  
1.888.234.1114 (toll free)  
651.296.3900 (TTY)  
1.800.657.3973 (TTY toll free)  
e-mail :  
DEED.lmi@state.mn.us  
Internet :  
mn.gov/deed/lmi

### Labor Market Information

#### Help Line:

651.259.7384

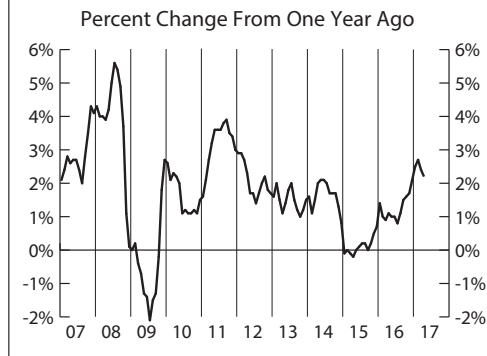
An equal opportunity employer and service provider.  
Upon request, this document can be made available  
in alternative formats.

PRE-SORTED  
FIRST-CLASS MAIL  
POSTAGE & FEES  
PAID  
PERMIT NO. 8717

## U.S. Consumer Price Index for All Urban Consumers (CPI-U)

The Consumer Price Index for All Urban Consumers (CPI-U) increased 0.2 percent in April on a seasonally adjusted basis the U.S. Bureau of Labor Statistics reported today. Increases in indices for shelter, energy, tobacco, and food all contributed to the monthly increase in the all items index. Many indices declined in April, including those for wireless phone services, medical care, motor vehicle insurance, apparel, used cars and trucks, recreation, and new vehicles.

The all items index rose 2.2 percent for the 12 months ending April. The index for all items less food and energy rose 1.9 percent over the last 12 months. The energy index rose 9.3 percent over the last year, while the food index increased 0.5 percent.



For more information  
on the U.S. CPI  
or the semi-annual  
Minneapolis-St. Paul CPI, call:  
651.259.7384  
or toll free 1.888.234.1114.

## Economic Snapshot

### Gender Differences in Career Choices

Minnesota is embarking on a unique public policy solution to occupational segregation: The Women in Nontraditional Jobs training program. The program provides training to women in high-wage jobs in which they are underrepresented.

Having served over 130 participants to date, it is one of DEED's smaller employment and training programs. But first results show that the women who are successfully trained in nontraditional jobs are finding employment in those sectors. Read how participant data compares with another training program, Pathways to Prosperity.

<https://mn.gov/deed/newscenter/social-media/deed-developments/?id=298492>

The employment and unemployment data in this publication were produced in cooperation with the Bureau of Labor Statistics, U.S. Department of Labor.  
© 2017 by the Department of Employment and Economic Development, Labor Market Information Office

#### Editor in Chief:

*Carol Walsh*

#### Editor:

*M. B. Hummel*

#### Technical Editor:

*Dave Senf*

#### Statistics:

*Nick Dobbins*

#### Writers:

*Chet Bodin  
Chloe Campbell  
Nick Dobbins  
Luke Greiner  
Dave Senf*

#### Graphics/Layout: and Website Preparation:

*Mary Moe*

#### Commissioner:

*Shawntera Hardy*

#### LMI Office

#### Director:

*Steve Hine*

#### Assistant Director and Technical

#### Supervisor:

*Oriane Casale*





# County Snapshot Benton

by Chet Bodin, Regional Analyst, Northwest Minnesota  
Department of Employment and Economic Development

## Past

Benton County was one of the original nine counties established by the territorial legislature in 1849 and was one of the three which were declared organized. The county was named in honor of Thomas Hart Benton, a senator from Missouri, who worked diligently to have Congress enact the Homestead Act. It is one of nine counties named after Mr. Benton in the United States.

## Future

In 2017 Benton County became one of the primary sites for the Industrial Hemp Pilot Project through the Minnesota Department of Agriculture. The average hemp grain yield in Minnesota in 2016 was 1,334 pounds of grain per acre<sup>1</sup>, making the crop a potentially lucrative and environmentally friendly alternative for small land holders in rural parts of Benton County.

**Note:** Until 4th quarter 2016 data are available, annual average data are 15/4 through 16/3.

## Economy

| 2016 Estimates                 | Benton   | Minnesota |
|--------------------------------|----------|-----------|
| Population                     | 39,992   | 5,489,594 |
| Labor Force                    | 21,540   | 2,990,254 |
| Average Unemployment           | 4.5%     | 3.9%      |
| Average Annual Income          | \$39,818 | \$54,457  |
| Cost of Living, Individual     | \$27,039 | \$30,084  |
| Cost of Living, Average Family | \$45,782 | \$80,976  |

Source: DEED Local Area Unemployment Statistics, Cost of Living; U.S. Census Bureau, 2016 American Community Survey

## Industry

| Benton | Top Industries of Employment         | Total 2015 Employment | Percent Change 2006-2015 | Average Annual Wages | Percent Change 2006-2015 |
|--------|--------------------------------------|-----------------------|--------------------------|----------------------|--------------------------|
|        | <b>Total, All Industries</b>         | <b>16,861</b>         | <b>1.2%</b>              | <b>\$38,605</b>      | <b>20.9%</b>             |
| 1      | Manufacturing                        | 3,567                 | -28.4%                   | \$45,994             | 8.9%                     |
| 2      | Trade, Transportation, and Utilities | 3,472                 | 5.9%                     | \$38,431             | 33.3%                    |
| 3      | Education and Health Services        | 3,306                 | 19.2%                    | \$30,665             | 21.9%                    |
| 4      | Construction                         | 1,826                 | 55.7%                    | \$56,793             | 46.3%                    |

Source: DEED Quarterly Census of Employment and Wages 2006-2015

## Trends

Manufacturing remained the industry with the highest employment in Benton County, despite shedding nearly 1,500 jobs since 2006, a 28.4 percent decline since before the recession. However, other industries in Benton County are picking up the slack. Notable, Construction jobs increased by 55.7 percent (up 653) since 2006, led by a significant increase of 495 in Heavy and Civil Engineering Construction jobs. In addition, average annual wages in Construction have surpassed those in Manufacturing, although wages in both industries increased since 2006. Like most of Minnesota, a large part of the Benton County population is entering retirement age and in need of more healthcare, leading to more jobs in Education and Healthcare Services, an increase of 533. Almost 400 of these jobs were added in Nursing and Residential Care Facilities.

<sup>1</sup><http://www.morrisuntribune.com/farm/agriculture/4244926-growing-future>



# County Snapshot Big Stone

## Past

Big Stone County was founded in 1862, but remained unorganized until 1881. Big Stone is the English translation for the Dakota Indian word for outcrops of granite and gneiss found in nearby Minnesota Valley. So widespread are the granite deposits that Big Stone County has become one of the leading granite mining areas in the United States. The county's first known granite quarry, the Baxter Quarry, was in operation as early as 1886.<sup>2</sup>

## Future

In 2015 the Federated Telephone Cooperative in Big Stone County raised \$7.92 million to construct broadband infrastructure, in part from DEED's Border to Border Broadband Development Grant Program. The ongoing project has brought broadband service to over 1,072 unserved areas in and around the cities of Ortonville, Barry, Beardsley, and Johnson. This investment has potential to bring more professional services to Big Stone County and provides the technological basis for future growth throughout the local economy.

**Note:** Until 4th quarter 2016 data are available, annual average data are 15/4 through 16/3.

## Trends

Over 42 percent of employment in Big Stone County is found in Education and Health Services, although there has not been much change in the number of jobs in these fields since 2006. Wages, on the other hand, have increased dramatically across all the major industries in Big Stone County. This is likely an attempt to keep up with the competition for workers as the labor market tightens. Already, there are nearly 200 fewer jobs in Big Stone County than there were 10 years ago. Recent investments in broadband aim to spur growth and grab the attention of future job-seekers and entrepreneurs.

## Economy

| 2016 Estimates                 | Big Stone County | Minnesota |
|--------------------------------|------------------|-----------|
| Population                     | 5,050            | 5,489,594 |
| Labor Force                    | 2,718            | 2,990,254 |
| Average Unemployment           | 4.9%             | 3.9%      |
| Average Annual Income          | \$37,104         | \$54,457  |
| Cost of Living, Individual     | \$25,162         | \$30,084  |
| Cost of Living, Average Family | \$42,309         | \$80,976  |

Source: DEED Local Area Unemployment Statistics; Cost of Living; U.S. Census Bureau, 2016 American Community Survey

## Industry

| Big Stone | Top Industries of Employment         | Total 2015 Employment | Percent Change 2006-2015 | Average Annual Wages | Percent Change 2006-2015 |
|-----------|--------------------------------------|-----------------------|--------------------------|----------------------|--------------------------|
|           | <b>Total, All Industries</b>         | <b>1,753</b>          | <b>-8.9%</b>             | <b>\$36,528</b>      | <b>50.9%</b>             |
| 1         | Education and Health Services        | 739                   | -0.1%                    | \$36,417             | 42.7%                    |
| 2         | Trade, Transportation, and Utilities | 335                   | 2.8%                     | \$34,007             | 52.6%                    |
| 3         | Construction                         | 193                   | 8.4%                     | \$59,771             | 58.5%                    |
| 4         | Public Administration                | 154                   | -16.8%                   | \$40,649             | 39.5%                    |

Source: DEED Quarterly Census of Employment and Wages 2006-2015

<sup>2</sup><http://prairiewaters.com/wp-content/uploads/2014/09/Prairie-Waters-Visitors-Guide.pdf>



# CountySnapshot Blue Earth

Note: Until 4th quarter 2016 data are available, annual average data are 15/4 through 16/3.

## Past

Blue Earth County saw great growth near the end of the 19th Century and has developed into a major part of Minnesota's economy. Originally a major railroad thoroughfare, some of the first industries included milling, transportation, and agriculture. Private and public post-secondary educational institutions have been established in Blue Earth County since then, adding a healthy dose of culture and social capital to the area. Consequently, the mix of industries and people in the county resulted in a population increase of 48 percent between 1950 and 2015.

## Future

Over 86 acres of former quarry land near downtown Mankato are part of the city and county redevelopment plans for the coming years. The broader community of residents and business owners have discussed using the property for a high-tech business park, a mountain biking park, or even a drive-in movie theatre<sup>3</sup>. Regardless, the new development is sure to change the composition of Blue Earth County's largest city and has the potential to bring many new jobs to the area

## Economy

| 2016 Estimates                 | Blue Earth County | Minnesota |
|--------------------------------|-------------------|-----------|
| Population                     | 66,441            | 5,489,594 |
| Labor Force                    | 39,471            | 2,990,254 |
| Average Unemployment           | 3.2%              | 3.9%      |
| Average Annual Income          | \$40,922          | \$54,457  |
| Cost of Living, Individual     | \$26,827          | \$30,084  |
| Cost of Living, Average Family | \$45,080          | \$80,976  |

Source: DEED Local Area unemployment Statistics; Cost of Living; U.S. Census Bureau, 2016 American Community Survey

## Industry

| Blue Earth | Top Industries of Employment         | Total 2015 Employment | Percent Change 2006-2015 | Average Annual Wages | Percent Change 2006-2015 |
|------------|--------------------------------------|-----------------------|--------------------------|----------------------|--------------------------|
|            | <b>Total, All Industries</b>         | <b>38,666</b>         | <b>5.6%</b>              | <b>\$40,036</b>      | <b>22.0%</b>             |
| 1          | Education and Health Services        | 12,011                | 21.9%                    | \$44,913             | 22.9%                    |
| 2          | Trade, Transportation, and Utilities | 8,735                 | 1.4%                     | \$31,117             | 23.4%                    |
| 3          | Leisure and Hospitality              | 4,114                 | 11.5%                    | \$13,344             | 37.7%                    |
| 4          | Manufacturing                        | 3,703                 | -1.2%                    | \$54,028             | 35.9%                    |

Source: DEED Quarterly Census of Employment and Wages 2006-2015

## Trends

Unsurprisingly, Education and Health Services is the leading industry in terms of employment in Blue Earth County, both of which account for a higher portion of jobs in the county than they do statewide. Growth in the combined sector was over 21 percent since 2006. Leisure and Hospitality also contributed to the economic recovery in Blue Earth County, growing by over 11 percent since its pre-recession level. Average annual wages grew in most industries throughout the county, led by Manufacturing where the average annual wage increased from \$39,761 in 2010 to \$54,028 in 2016 – a 35.9 percent hike. Often overshadowed by education institutions in the region, Manufacturing is not typically identified with Blue Earth County, but it continues to provide a sustainable income for many of its long-term residents.

<sup>3</sup>[http://www.mankatofreepress.com/news/next-up-planning-for-quarry-redevelopment/article\\_6c510ca4-26d7-11e7-8117-87131d9f1dde.html](http://www.mankatofreepress.com/news/next-up-planning-for-quarry-redevelopment/article_6c510ca4-26d7-11e7-8117-87131d9f1dde.html)



# County Snapshot Brown

## Past

Much of Brown County was established in the mid-nineteenth century by German settlers to take advantage of the fertile Minnesota River Valley and burgeoning railroad economy. In addition to agriculture and stock, some of the first family breweries in the nation were started in Brown County's largest city, New Ulm. By 1916 the brewing industry in Brown County employed over 70 people in the New Ulm area and produced approximately 30,000 barrels per year.<sup>4</sup>

**Note:** Until 4th quarter 2016 data are available, annual average data are 15/4 through 16/3.

## Future

Although it isn't one of the top industries in terms of employment, the New Ulm Chamber of Commerce notes that over 53 percent of the economy is still related to agriculture. Animal production in particular remains one of the most influential industries in Brown County. The New Ulm Economic Development Authority recently reported a new hog processing plant is expected to employ 1,100 people in the area by 2020.<sup>5</sup>

## Trends

Currently (2016 Q3), employment in animal production was over 10 times more prevalent in Brown County than the rest of the state. Self-employed individuals in Agriculture, Forestry, Fishing, and Hunting also increased between 2010 and 2014 in Brown County. Manufacturing has shed jobs in Brown County since 2006, but wages have increased by over 30 percent to an average of \$51,308 annually for its employees. In fact, wages in all industries have increased by almost 30 percent across Brown County since 2006 while the cost of living for an average family in Brown County is almost half of what it costs in Minnesota on average.

## Economy

| 2016 Estimates                 | Brown County | Minnesota |
|--------------------------------|--------------|-----------|
| Population                     | 25,331       | 5,489,594 |
| Labor Force                    | 14,755       | 2,990,254 |
| Average Unemployment           | 4.1%         | 3.9%      |
| Average Annual Income          | \$39,618     | \$54,457  |
| Cost of Living, Individual     | \$23,450     | \$30,084  |
| Cost of Living, Average Family | \$41,240     | \$80,976  |

Source: DEED Local Area Unemployment Statistics; Cost of Living; U.S. Census Bureau, 2016 American Community Survey

## Industry

| Brown | Top Industries of Employment         | Total 2015 Employment | Percent Change 2006-2015 | Average Annual Wages | Percent Change 2006-2015 |
|-------|--------------------------------------|-----------------------|--------------------------|----------------------|--------------------------|
|       | <b>Total, All Industries</b>         | <b>13,828</b>         | <b>-2.6%</b>             | <b>\$38,710</b>      | <b>29.4%</b>             |
| 1     | Education and Health Services        | 3,088                 | 5.5%                     | \$36,844             | 32.4%                    |
| 2     | Trade, Transportation, and Utilities | 2,786                 | 3.8%                     | \$31,011             | 25.2%                    |
| 3     | Manufacturing                        | 2,783                 | -24.0%                   | \$51,308             | 30.8%                    |
| 4     | Leisure and Hospitality              | 1,158                 | -5.2%                    | \$12,114             | 27.9%                    |

Source: DEED Quarterly Census of Employment and Wages 2006-2015

<sup>4</sup>History of Brown County, Minnesota: Its People, Industries and Institutions; Fritsche, L.A. 1916. Walsworth. [https://books.google.com/books?id=Nm8\\_AQAAMAJ](https://books.google.com/books?id=Nm8_AQAAMAJ)  
<sup>5</sup><http://www.nujournal.com/news/local-news/2017/01/11/new-ulm-development-officials-work-to-recruit-prospects/>