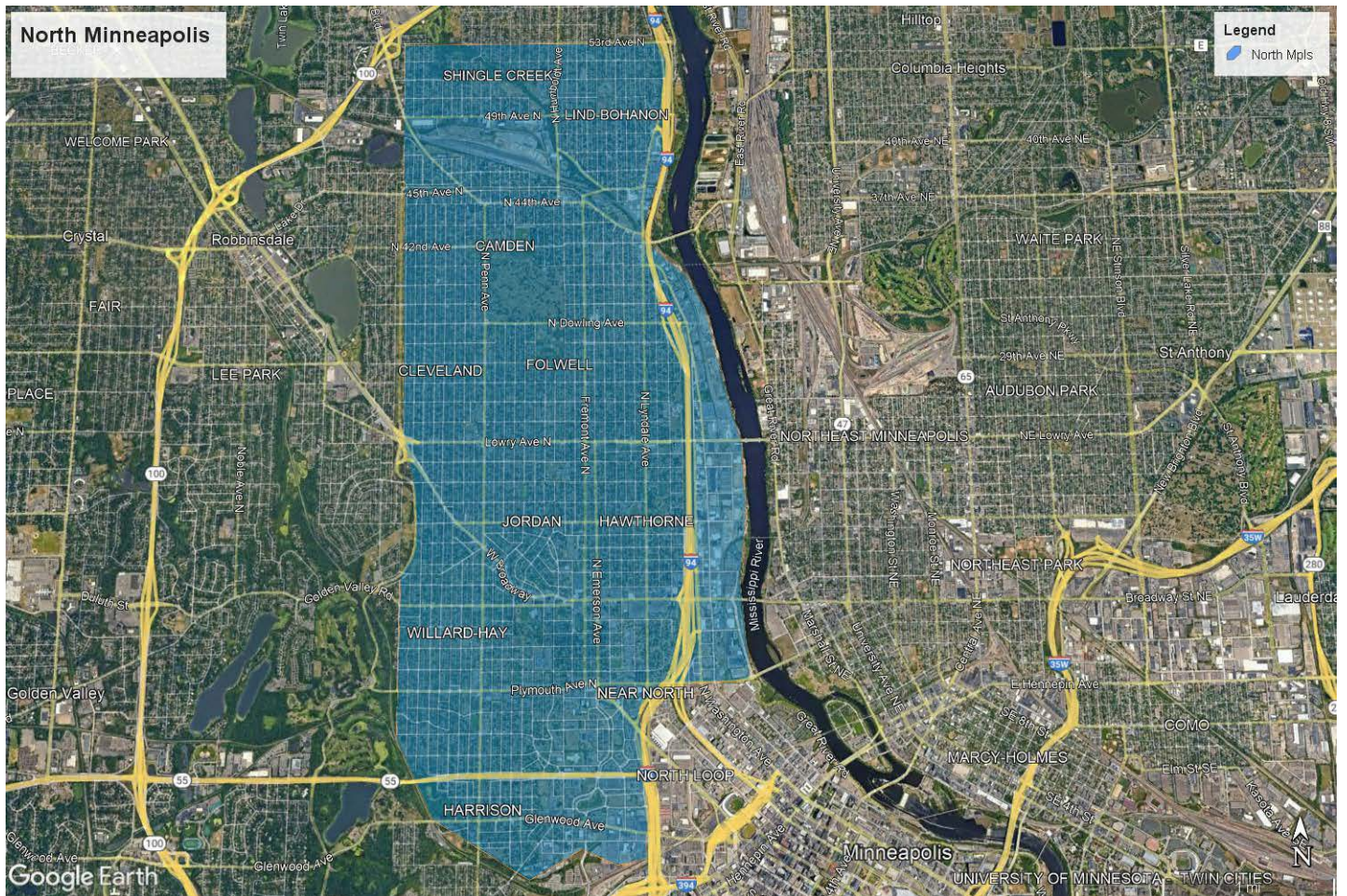


North Minneapolis' West Broadway, Camden, or other Northside neighborhoods

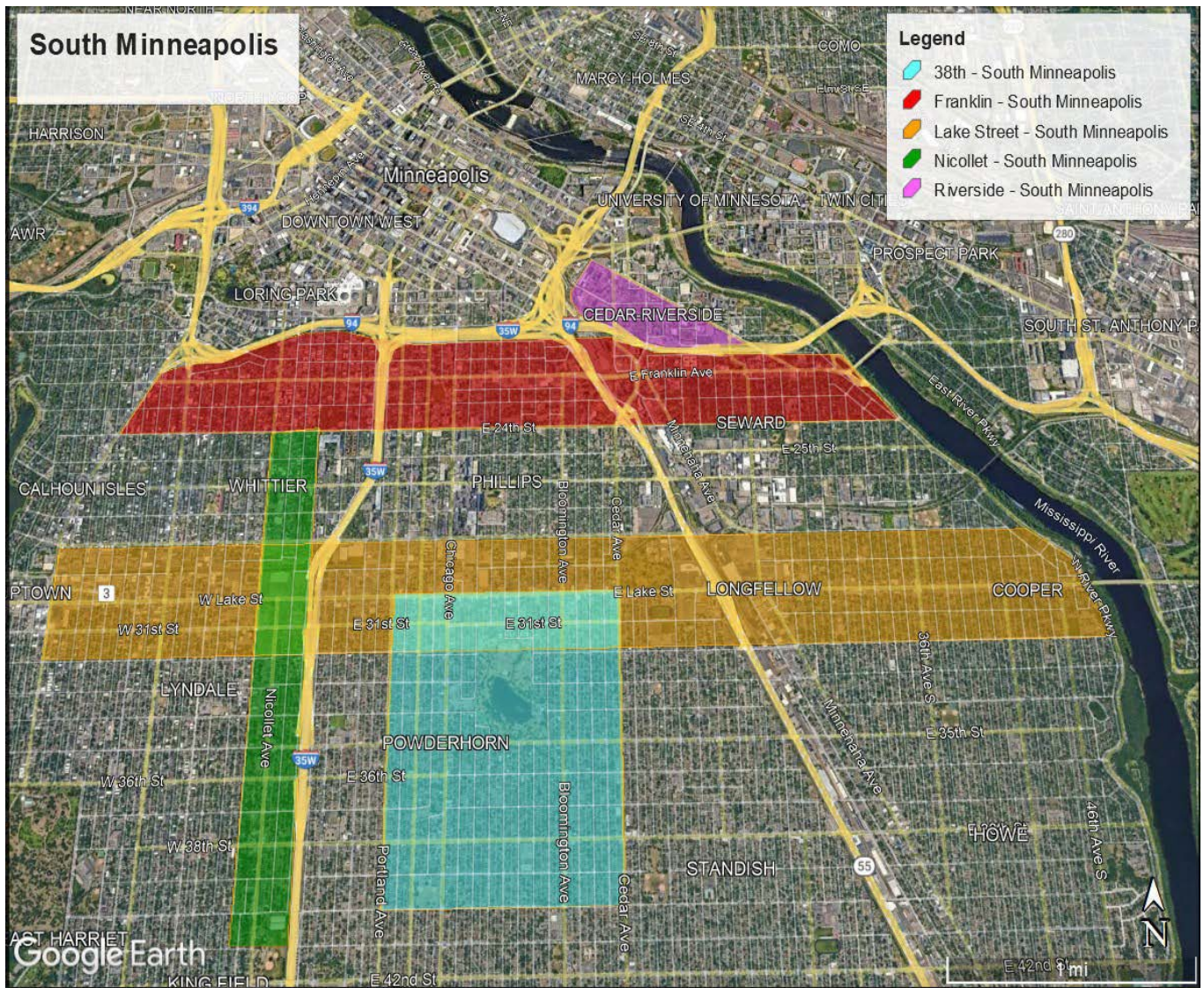
- From 53rd Ave N in the north to Basse= Creek in the south, and from N Xerxes in the west to the Mississippi River and Hwy 94 in the east,
- including the Camden, Cleveland, Folwell, Jordan, Hawthorne, Willard-Hay, Near North, and Harrison Neighborhoods, as well as West Broadway from the River to N Xerxes.

Neighborhood Maps



South Minneapolis' Lake Street, 38th and Chicago, Franklin, Nicollet, and Riverside corridors.

- **Lake Street** – from Hennepin Ave in the west to West River Parkway in the east, and including 2 blocks north (28th St) and 2 blocks south (32 St)
- **38th and Chicago** – from Portland in the west to Bloomington in the east, and from 36th St in the north to 40th St in the south
- **Franklin Ave** – from Hennepin in the west to West River Parkway in the east, and from Hwy 35W in the north to 24th Street in the south
- **Nicollet Ave** – From Blaisdell Ave in the west to Stevens Ave in the east, and from Franklin Ave in the north to 36th St in the south
- **Riverside** – from 15th Ave to Franklin Ave, and Hiawatha Trail and Hwy 94W in the south



St. Paul's University Avenue, Midway, Eastside, or other St. Paul neighborhoods

- **University Avenue** – from Hwy 280 to the Capitol and from Minnehaha Ave to Hwy 94/St. Anthony Ave
- **Snelling Ave** – from Englewood to Hwy 94/St. Anthony Ave, and from Fairview to Hamline
- **East Side** - from 35E to 120
- **Rice Street** – from Larpenteur to University
- **Selby Ave** – from Snelling Ave to MacKubin Street
- **West Side** – from the Mississippi River to Annapolis Street

